

CHARLES ROOKS & DAGOLA RESERVE

LANDSCAPE CONCEPT PLAN REPORT

19 NOVEMBER 2025

T.C.L



WHITEHORSE
CITY COUNCIL

CHARLES ROOKS & DAGOLA RESERVE

LANDSCAPE CONCEPT PLAN REPORT

Report prepared by:
Taylor Cullity Lethlean (TCL)

Client:
Whitehorse City Council

Revision:
06

Date of Issue:
19 November 2025

Introduction

TCL were engaged in 2024 to undertake a landscape concept plan process for Charles Rooks and Dagola Reserve. The project methodology outlined a rigorous community and stakeholder consultation process to understand the community's ambitions for the park. The project also included an in-depth site analysis and issues and opportunities phases that unpacked the site and communicated possibilities for the park. The Landscape Concept Plan articulates the key projects and implementation plan to achieve the vision for the park through incremental improvements over the next 15 years.



Photo: Dagola Reserve

CONTENTS

Executive Summary	4
1. Landscape Concept Plan	5
2. Site Context	6
3. Strategic Context	8
4. Community Consultation Summary	10
5. Issues and Opportunities	13
6. Landscape Concept Plan Direction	16
7. 15 Years Capital Works Program	24
Appendix	
A. Community Consultation Summary	28
B. Site Analysis	35

EXECUTIVE SUMMARY

Overview

The Charles Rooks and Dagola Reserve Landscape Concept Plan sets out a strategy to incrementally improve the amenities and infrastructure in Charles Rooks and Dagola Reserve into a diverse, sustainable, and ecologically inclusive park by 2040. The concept plan outlines Council's vision, goals, and strategic objectives to guide the development of Charles Rooks and Dagola Reserve over the next 15 years through a series of key projects. The landscape concept plan is the result of extensive community and stakeholder engagement, in-depth analysis, issues and opportunities assessment, and a landscape concept plan process.

Vision Statement

The vision for Charles Rooks & Dagola Reserve is to establish a dynamic and diverse park that enhances and maintains its unique identity and ecological value. The park will offer a varied, safe, ecologically rich experience

Principles

1. Develop a landscape concept plan for the 15-year project implementation.
2. Enhance and preserve the natural environment.
3. Promote diverse recreational opportunities for physical and mental well-being.
4. Connect communities to existing rich habitat and sustainable water practice.
5. Connect communities through varied activities and interactions.

Key Projects

The Landscape Concept Plan outlines a series of key projects intended to achieve the Council's strategic objectives. These projects focus on enhancing access and movement, improving open space and landscape character, and upgrading recreational facilities and amenities within the park.

15 Years Capital Works Program

The implementation plan outlines the concept plan key projects, recommendations, priority of delivery, and a high level opinion of probable cost (OPC) to achieve the concept plan objectives. It is recommended to review the 15 year capital works Program and continued delivery of the concept plan every 5 years"

Conclusion

The Charles Rooks and Dagola Reserve Landscape Concept Plan will serve as a guide for the next 15 years. Through collective efforts, the goal is to develop a vibrant, sustainable, and inclusive community that meets the needs of both current and future generations. All community members and stakeholders are encouraged to contribute to realising the vision for Charles Rooks and Dagola Reserves 2040.



Charles Rooks Reserve



Dagola Reserve

Right: Render views show potential improvements to Charles Rooks and Dagola Reserve over the next 15 years.

1. LANDSCAPE CONCEPT PLAN

The Landscape Concept Plan Charles Rooks and Dagola Reserve aims to enhance Access and Movement, improve Open Space and Landscape Character and upgrade Recreation facilities and amenities for local and broader communities.

6.4 Key Projects

Access and Movement

- 01 02 **A connected path network**
- 03 04 Establish a connected path network through Charles Rooks and Dagola Reserve with existing and new paths.

Open Space and Landscape Character

- 05 **Improve reserve safety, sightlines and passive surveillance**
Implement maintenance strategies to facilitate plant growth while ensuring improved sightlines
- 06 **A strategy for the replacement of pine trees**
Develop a tree replacement strategy for the aging pine tree population.
- 07 08 **Incorporate the existing understorey planting**
Enhance existing understorey planting and protect remnant vegetation and expand Conservation areas.
- 09 10 **Establish new garden beds**
Planting additional garden beds and increase garden bed planting along road edges.
- 11 **Ecologically sensitive lighting**
Consider light fittings with motion activation, time restriction and fauna-sensitive lights to decrease impacts on the habitat.

Recreation Facilities and Amenities

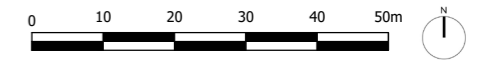
- 12 13 **Upgrade playground facilities**
Upgrade and consolidate the playground facilities at Charles Rooks Reserve to offer a diverse range of play opportunities for all age groups. Create a multi-use area including shelter, BBQ facilities, tables and benches, waste bins, and water point at the southwest of the Charles Rooks Reserve.
- 14 15 **Enhance park amenities**
Restore the existing play space to natural landscape, add seating and picnic setting opportunities that would better fit the natural environment throughout Dagola Reserve.

Provide additional seating areas throughout the reserve.



Legend

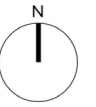
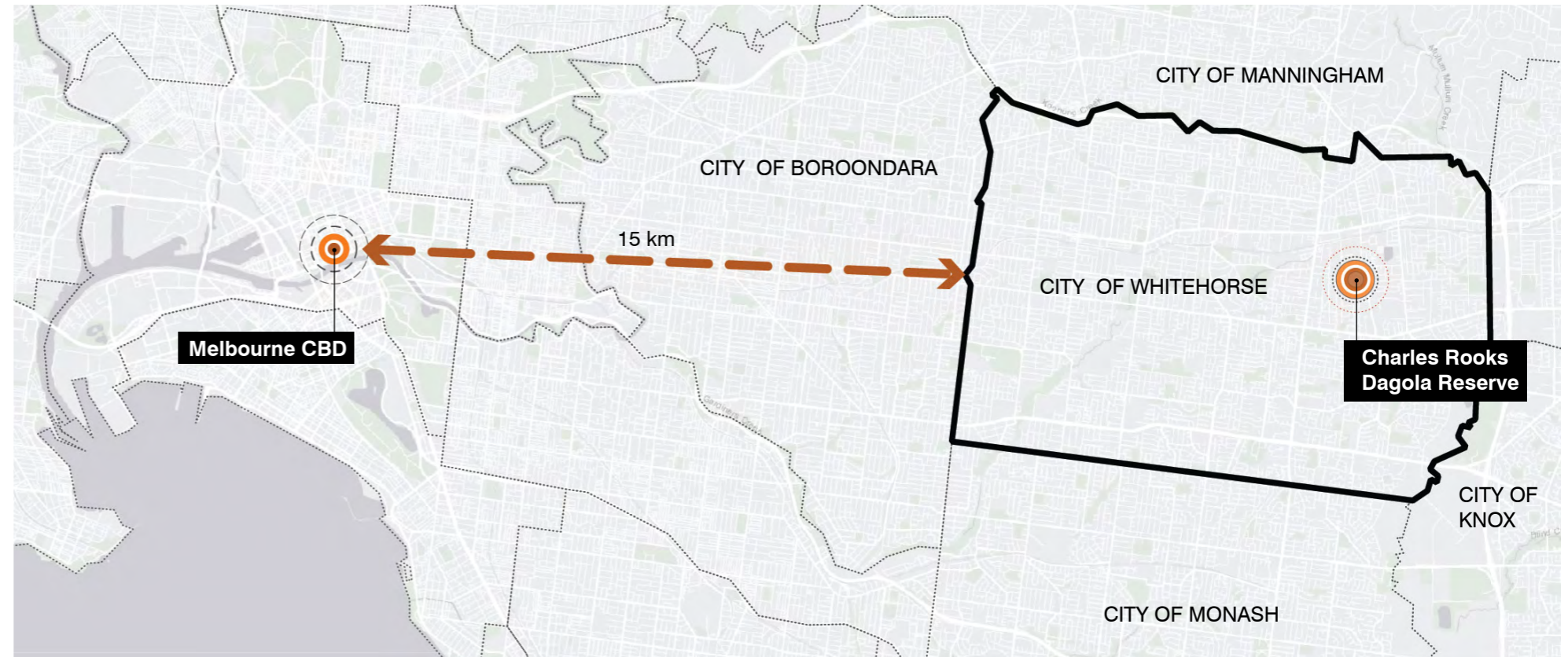
- Existing Trees
- Proposed Trees
- Existing Garden Bed
- Proposed Garden Bed
- Existing Conservation Area
- Proposed Conservation Area
- Remnant Vegetation Area (EVC 2005)
- Potential Conservation Area
- Proposed Rain garden/Wetland
- Lawn
- Existing Path
- Proposed Permeable Path
- Proposed Sealed Path
- Proposed Bench Seat
- Proposed Picnic Setting
- Proposed Playground
- Proposed Lights
- Proposed Multi-use area
- Way-finding Signage
- Educational Signage
- Water Point



2. SITE CONTEXT

The City of Whitehorse is situated 15 kilometers east of Melbourne, spanning across an area of 64 square kilometers. It is bordered by the City of Manningham to the north, the Cities of Maroondah and Knox to the east, the City of Monash to the south, and the City of Boroondara to the west.

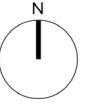
Charles Rooks and Dagola Reserve is located to the northeast of the Municipality.



NOT IN SCALE

The City of Whitehorse is divided into 11 wards. Charles Rooks and Dagola Reserve is situated to the northeast in the Walker ward.





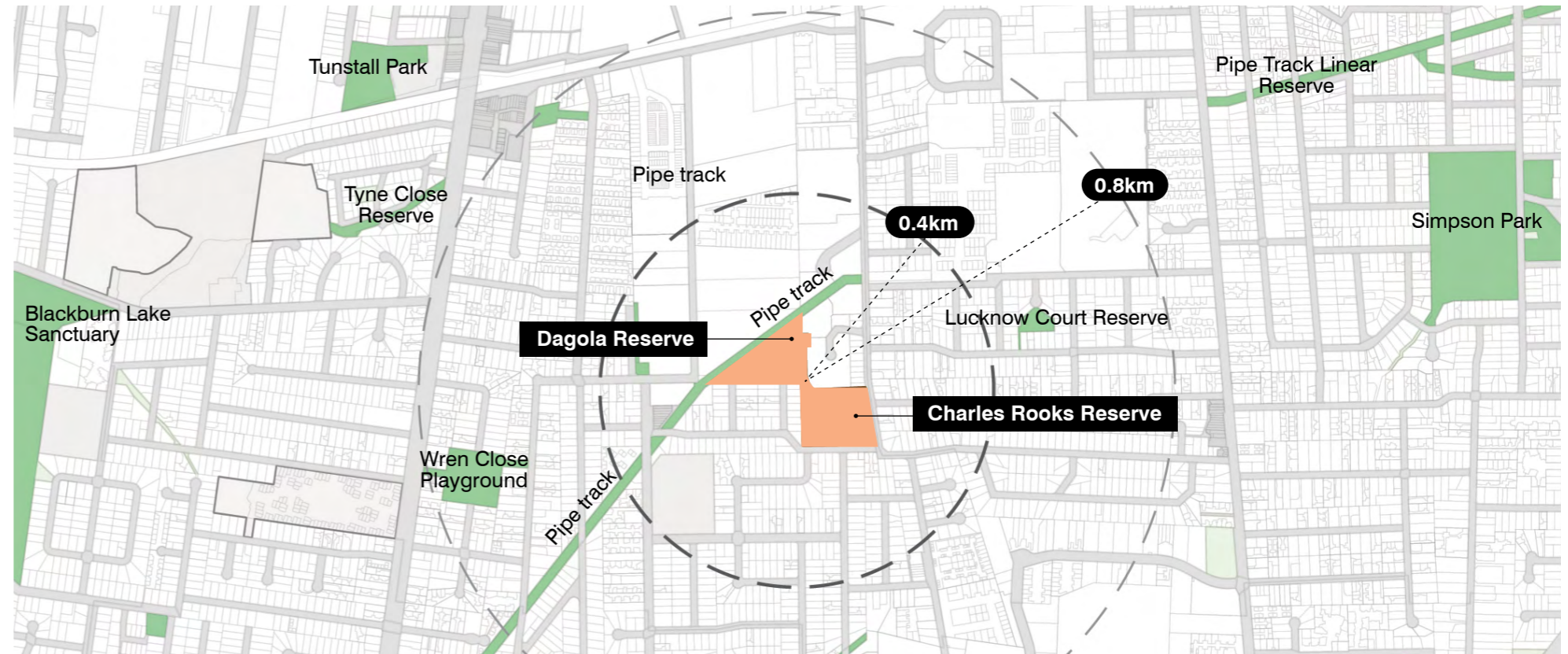
SCALE: 1 in 16000

Green Space

The diagram illustrates a walking catchment area with a radius of 800-meter, encompassing adjacent open green spaces. Charles Rooks and Dagola Reserve serve as the primary open space destinations for the local neighborhood. Dagola Reserve is connected by the Melbourne Water Pipe Track, which is an off-road bike route/shared path.

Legend

- Site
- Green Space
- Walking Radius

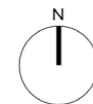


Existing Site Aerial and Photos

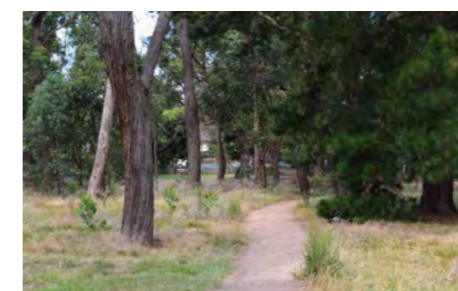
Charles Rooks Reserve, spanning approximately 1.9 hectares, is bounded by Rooks Road to the west and Lorikeet Street to the south, with residential areas to the north and west. The site spans approximately 120 meters in length and 160 meters in width.

Dagola Reserve, covering approximately 1.6 hectares, is situated to the north of Charles Rooks Reserve and is connected by a pathway. It is bounded by residential areas to the south and east, with a pipe track to the north adjacent to an industrial zone.

Both reserves are characterised as a natural landscape with areas of valued remnant vegetation. Additionally, each site features a playground to serve the local community.



NOT IN SCALE



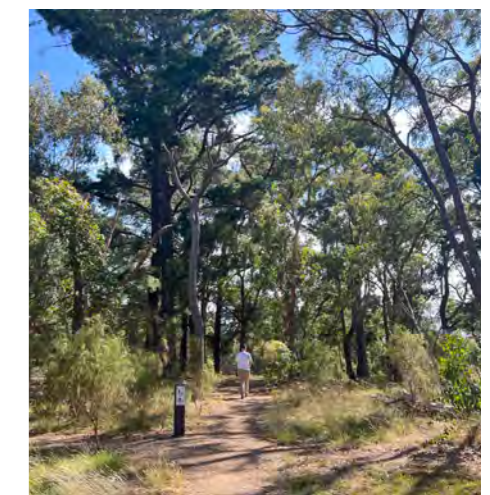
Charles Rooks Reserve



Charles Rooks Reserve



Dagola Reserve



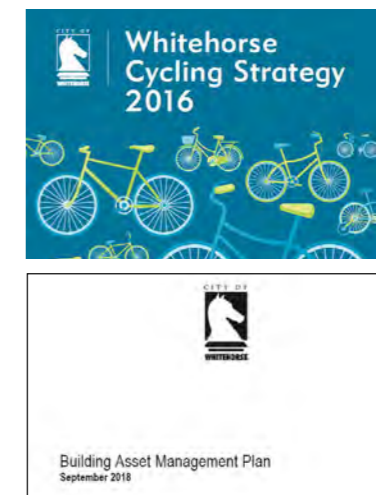
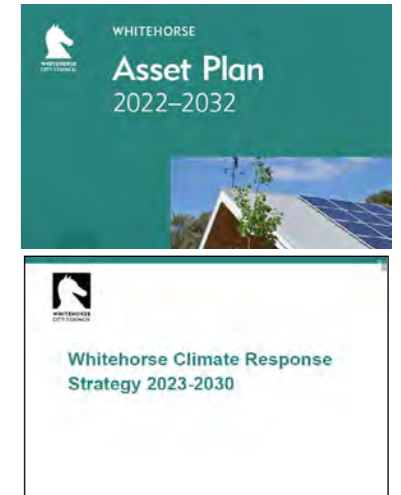
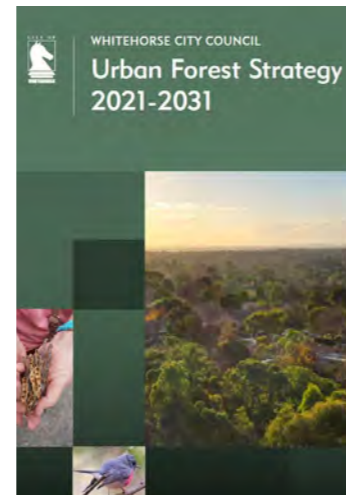
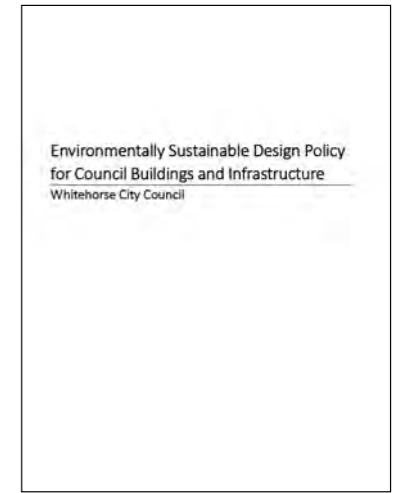
Dagola Reserve

3. STRATEGIC CONTEXT

3.1 Council Strategic Documents

19 strategic documents listed below were reviewed to align the ambitions of the Concept Plan with the strategic objectives of Council. For the key documents, a high level summary has been provided.

- Council Plan 2021-2025
- Whitehorse 2040 Community Vision
- Whitehorse Open Space Strategy 2024 (Currently in development)
- Whitehorse Environmentally Sustainable Design (ESD) Policy for Council Buildings and Infrastructure
- Urban Forest Strategy 2021-2031
- Urban Forest Strategy Action Plan 2021-2031
- Interim Urban Forest Policy and Tree Management Plan Asset Plan
- Whitehorse Health and Wellbeing Plan 2021-2025
- Whitehorse Asset Plan 2022-2032
- Whitehorse Climate Response Strategy 2023-2030
- Integrated Water Management Strategy
- City of Whitehorse Recreation Strategy 2015-2024
- Whitehorse Play Strategy 2011 / Whitehorse Play and Social Recreation Action Plan (Currently in development)
- Whitehorse Cycling Strategy 2016
- Building Asset Management Plan 2018
- Pavilion Development Policy
- Melbourne East Regional Sport And Recreation Strategy
- Open Space Asset Management Plan 2019



3.2 Strategic Priorities

The Charles Rooks and Dagola Reserve Landscape Concept Plan was developed based on extensive research and various planning considerations. This section summarises the key contextual and planning factors that were evaluated and incorporated during the creation of the Landscape Concept Plan.

- **Whitehorse City Council, seeks to create a sustainable, vibrant, and inclusive community with a strong focus on environmental stewardship and social cohesion.**
(Whitehorse 2040 Community Vision)
- The Landscape Concept Plan will encourage sustainable building practices to reduce environmental impact and promote energy efficiency.
Whitehorse Environmentally Sustainable Design (ESD) Policy for Council Buildings and Infrastructure
- Plan to enhance and expand open spaces to meet community needs, improve biodiversity, and promote recreational opportunities.
Whitehorse Open Space Strategy 2024 (Currently in development)
- **Provide a diverse linked network of open space with people of all ages recreating, socialising and enjoying the outdoor space, and bushland reserves brimming with indigenous flora and fauna.**
Whitehorse Open Space Strategy 2024 (Currently in development)
- The Landscape Concept Plan seeks to increase urban tree canopy cover, improve biodiversity, and enhance the ecological health of urban areas.
(Urban Forest Strategy 2021-2031)
- Prioritises initiatives to improve physical and mental health, enhance community well-being, and promote active lifestyles.
(Whitehorse Health and Wellbeing Plan 2021-2025)
- The Landscape Concept Plan will align with the actions to mitigate and adapt to climate change, focusing on reducing greenhouse gas emissions and enhancing resilience.
(Whitehorse Climate Response Strategy 2023-2030)
- The Landscape Concept Plan will aim to manage water resources sustainably, improve water quality, and promote efficient water use throughout the precinct and align with the Integrated Water Management Strategy.
- **Minor upgrade to include a picnic facility and additional unstructured recreation facilities.**
Whitehorse Open Space Strategy 2024 (Currently in development)
- **Provide a variety of creative, high quality, socially inclusive recreation spaces that offer people of all ages opportunities to be active and recreate together.**
(Whitehorse Play Strategy 2011 / Whitehorse Play and Social Recreation Action Plan) (Currently in development)

4. COMMUNITY CONSULTATION SUMMARY

Community engagement for Charles Rooks and Dagola Reserve took place from January to February 2024, involving several activities to gather feedback.

Letters were sent to residents encouraging participation in the Whitehorse Your Say survey. The survey, held from January 22 to February 18, received responses from 220 participants.

Friends of Charles Rooks and Dagola Reserve were engaged to gather further feedback.

The Draft Landscape Concept Plan will proceed to Community Consultation Round 2 to gather community feedback. Following the second round of community consultation the concept plan will proceed to Council endorsement with required amendments.

Photo: Round 1 Community Pop-up Session



Summary of the engagement activities

1. Letters to Residents:

- Sent letters informing residents about the project and encouraging participation in the Whitehorse Your Say survey.
- Total of 943 letters sent to residents within a 500m catchment area.

2. Your Say Survey:

- Conducted from January 15, 2024- February 18, 2024.
- A total of 683 people were aware through Your say platform of which 220 completed the survey.

3. Community Pop-up Session:

- Held on January 20, 2024, from 10:00 am to 12:00 pm.
- Approximately 50 attendees, they were urged to complete paper or online surveys.

4. Engagement with Mount Pleasant Road Primary School Students:

- February 15, 2024; 9 students attended.

5. Engagement with Friends of Charles Rooks and Dagola Reserve:

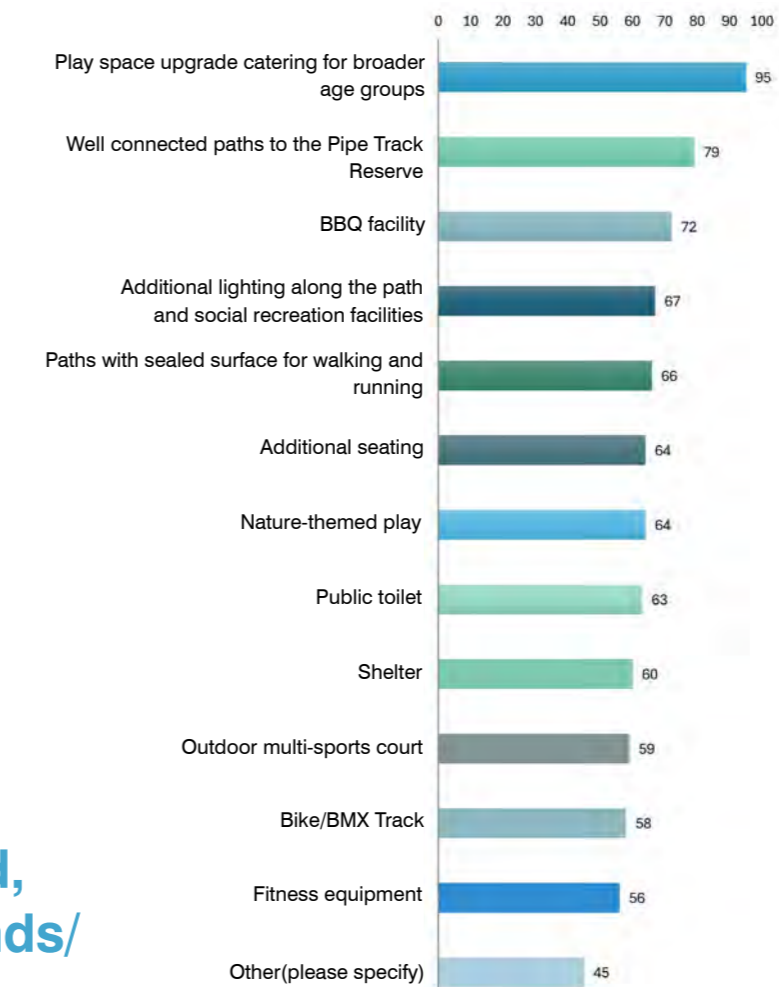
- February 29, 2024; 3 members attended.

Top five park facilities include walking, enjoying nature and green open space, playground, dog walking and meeting friends/families.

96% of survey respondents are from local, Nunawading.

65% of the survey respondents visit Charles Rooks and Dagola Reserve daily or a few times a week.

What improvements would encourage you to visit Charles Rooks and Dagola Reserve more often? Please choose your top five.



4.2 Round 2 Community Consultation Summary

Community engagement for Charles Rooks & Dagola Reserve took place from January to March 2025, involving several activities to gather feedback.

Letters were sent to residents encouraging participation in the Whitehorse Your Say survey. The survey, held from March 3 to March 17 and received responses from 201 participants.

Due to the overwhelming support for the master plan, minimal changes have been adopted. A detailed review of the no mow areas was undertaken to align with the received feedback. These changes are now reflected throughout this document.

Photo: Round 2 Community Pop-up Session



Summary of the engagement activities

1. Letters to Residents:

- Sent letters informing residents about the project and encouraging participation in the Whitehorse Your Say survey.
- Total of 943 letters sent to residents within a 500m catchment area.

2. Your Say Survey:

- Conducted from March 3 to March 17, 2025. A total of 900 people were aware through Your say platform of which 203 completed the survey.

3. Community Pop-up Session:

- Held on March 1, 2025, from 10:30 am to 12:30 pm, with over 50 residents participating during this time.

Key findings

1. **73%** of the survey respondents support or strongly support the Charles Rooks & Dagola Reserve.
2. **73%** of the survey respondents supported or strongly supported the proposed additional pathways to improve accessibility within the park.
3. **74%** of the survey respondents supported or strongly supported the proposed combination of the playground with basketball/netball half-court, upgrade to better accommodate a broader range of age groups.
4. **74%** of the survey respondents supported or strongly supported the proposed new larger play space, shelter, BBQ, picnic table and seating, bins.
5. **82%** of the survey respondents supported or strongly supported the proposed landscape and ecological enhancements at Dagola Reserve to protect existing flora and fauna while improving biodiversity and educational opportunities.

Additional comments

Due to the existing conditions of the reserve diverse views and some conflicting comments were received. The survey received 126 additional comments that can be summarised at a high level by key areas:

Tree Management and Safety:

Protecting healthy pine trees as they add character and history to the park.

Ensuring a good and balanced variety of tree species for replacement after removing dangerous pine trees.

Lighting and Safety:

Providing sufficient lighting in Dagola Reserve and along Charles Rooks path to improve safety at night and encourage walking.

Using wildlife-sensitive lighting to avoid disturbing birds and animals.

Playground and Accessibility:

Incorporating activities in Dagola Reserve into the new upgraded playground at Charles Rooks.

Ensuring paths are wheelchair-friendly and including a wheelchair swing.

Adding more play equipment suitable for older children and considering a water feature.

Providing shaded areas in the playground to make it usable on hot days.

Parking and Traffic Management:

Addressing traffic management and parking restrictions around local streets to ensure a smooth and safe experience for both visitors and residents.

Basketball Courts:

Adding two or more basketball courts to prevent overcrowding and using stainless nets to prevent damage.

Separating the courts from roads to avoid balls going onto the road.

Fitness and Recreation:

Installing outdoor fitness equipment like single bars and parallel bars.

Providing adult equipment near courts to encourage family activities.

Considering a BMX pump track or similar for kids.

Conservation and Vegetation:

Addressing the lack of understory planting to improve habitat for smaller birds and prevent dieback problems.

Preserving existing remnant vegetation and avoiding widening paths at the expense of orchid populations.

Ensuring new tree species planted after pine tree removal are indigenous to the area.

Facilities and Amenities:

Installing toilet facilities to accommodate longer stays at the park.

Providing a natural splash park for kids to play in over summer.

Considering a fenced off-lead dog area.

Community and Feedback:

Ensuring future surveys have expandable comment fields for better user feedback.

Adding a water fountain with a dog bowl that can be emptied.

Providing more seating in the park, especially in the morning.

Additional Considerations:

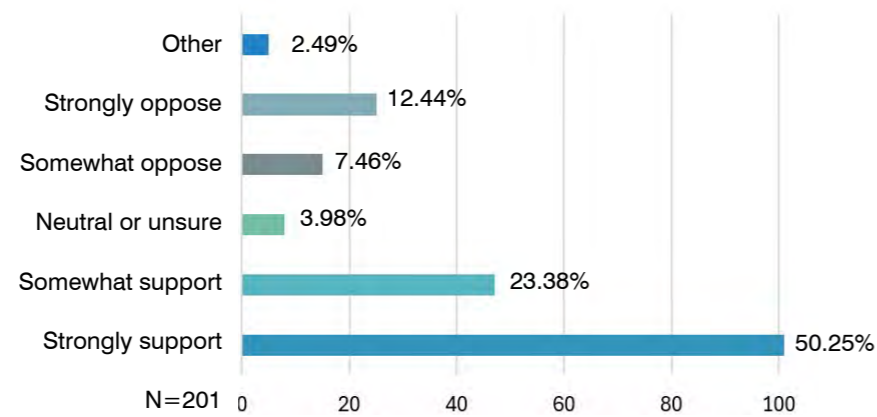
Carefully selecting pavement materials to maintain the natural character of the reserve.

Ensuring the play space upgrade provides interesting activities for kids.

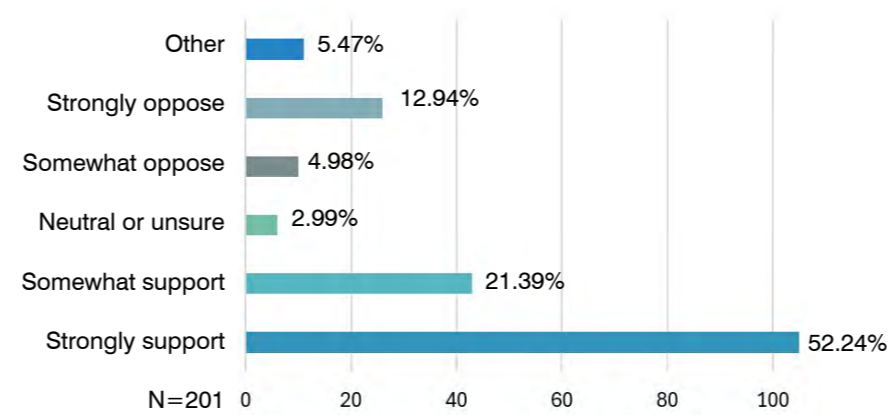
Considering the impact of proposed park improvements on rare plant communities and native vegetation.

4.2 Round 2 Community Consultation Summary

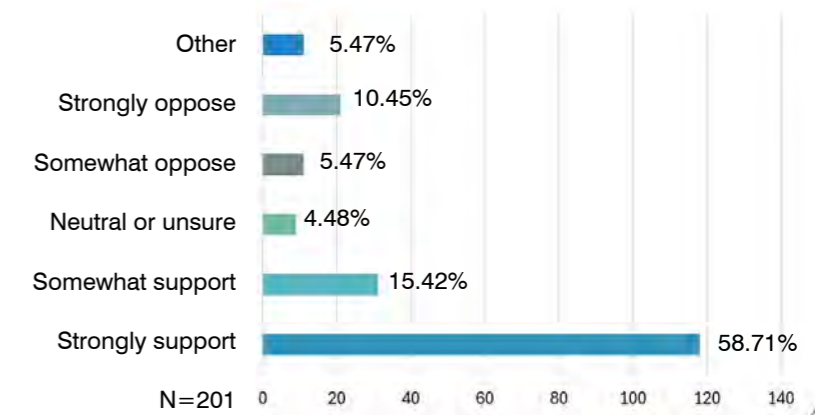
Q1. How do you feel overall about the Charles Rooks and Dagola Reserve Draft Landscape Concept Plan?



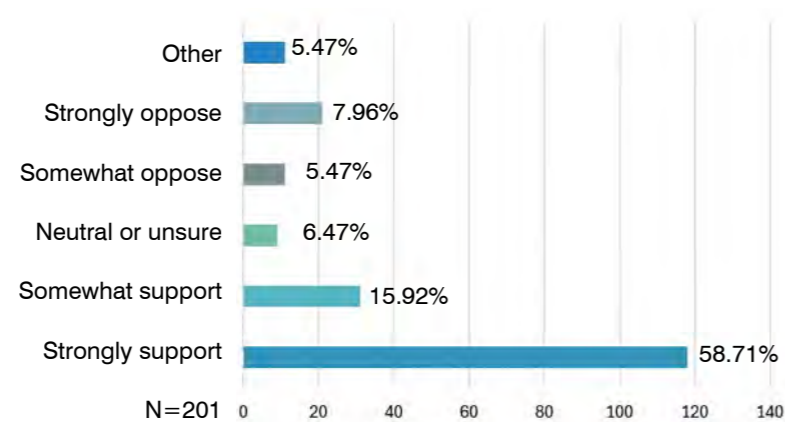
Q2. Do you support proposed additional pathways to enhance accessibility within the reserves?



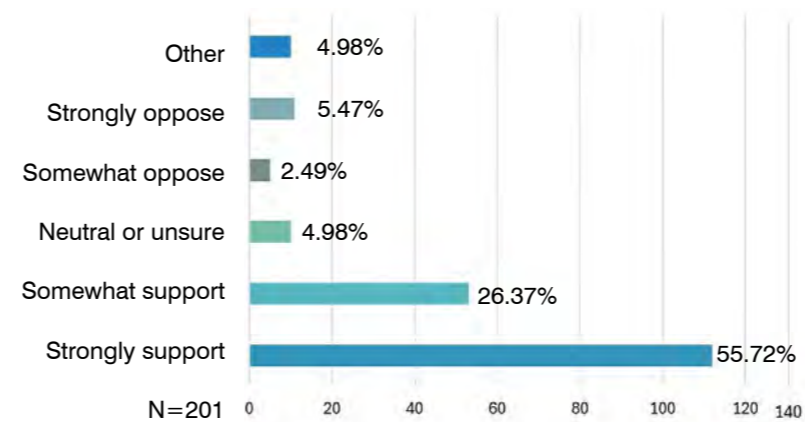
Q3. Do you support the proposed changes to combine two play spaces into an upgraded play space at Charles Rooks Reserve, featuring a co-located social recreation area with a basketball/netball half-court and outdoor fitness equipment?



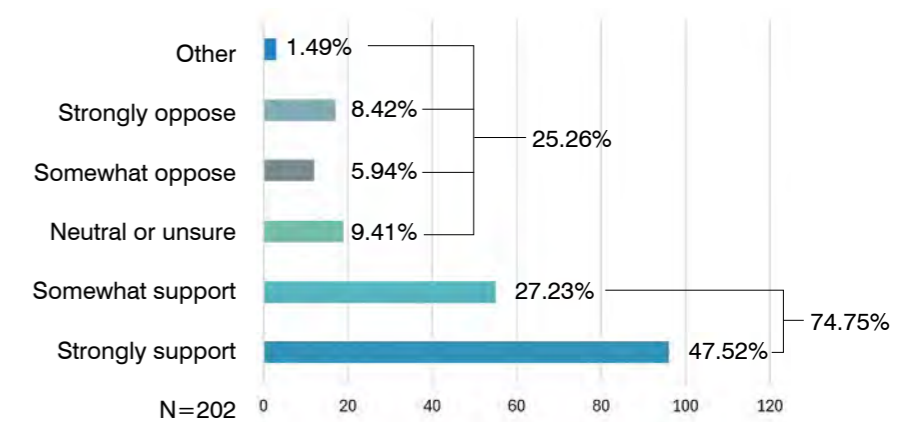
Q4. Do you support proposed improvements to reserve's features and recreational facilities including a new larger play space, shelter, BBQ, picnic table and seating, bins, and more?

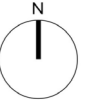


Q5. Do you support the proposed landscape and ecological enhancements at Dagola Reserve to protect existing flora and fauna while improving biodiversity and educational opportunities?



Q6. Do you support proposed ecologically sensitive lighting?





NOT IN SCALE

5. ISSUES AND OPPORTUNITIES

An issues and opportunities diagram was undertaken following the site analysis phase. This provided a framework for the development of the Landscape Concept Plan.

The issues and opportunities can be characterised into three main groups these include: Access and Movement, Open space and Landscape Character and Recreation facilities and amenities.

Access and Movement

01 Path Network

Issues

The reserve features a diverse network of paths with varying surface finishes.

The site has accessibility issues due to narrowed and unsealed pathways, along with dense vegetation.

Some sections of the path have experienced erosion, while parts of the network are aging and lifting, posing potential trip hazards.

There is unclear direction of travel and non-conforming path in parts.

Opportunities

Improve the path network and upgrade existing paths to enhance accessibility throughout the reserve. Increased connection and access into the reserve, and potential activation with Pipe Track Reserve.

02 Reserve Entries and View Lines

Issues

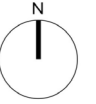
The reserve has multiple entries and some are undefined.

The park view lines are obstructed and can decrease visibility.

Opportunities

Enhance the entry points, signage and park view lines. Clarify view lines and ensure the park meets Crime Prevention Through Environmental Design (CPTED) principles.





NOT IN SCALE

Open Space and Landscape Character

03 Safety

Issues

The site has prevalent safety concerns, particularly in Dagola reserve, attributed to lack of passive surveillance and sightlines and narrowed access from Charles Rooks Reserve.

Opportunities

Enhance sight lines, install motion-activated lighting with environmentally friendly lighting for nocturnal animals.

Improve accessibility and legibility.

Where appropriate, increase view lines where appropriate to enhance view and decrease safety concerns.

04

Vegetation

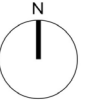
Issues

The park has a large number of aging pine trees.

Opportunities

Prepare a tree replacement strategy for the aging pine tree population.





NOT IN SCALE

Recreational facilities and amenities

05 Lighting

Issues

The park lacks adequate lighting that increases fears of encountering wildlife and criminal activities, especially at night.

Reduce use at twilight hours due to lack of lighting.

Opportunities

Review lighting solutions and evaluate carefully the impact on the wildlife. Assess areas where lighting can be introduced to enhance safety.

06 Playground

Issues

The playground located in Charles Rooks Reserve poses safety risks due to its proximity to the road. High-speed traffic compounds these concerns, potentially requiring traffic calming measures.

The playground in Dagola Reserve has limited play opportunities and lacks unstructured play components.

Opportunities

Consolidate and centralise play space to cater for diverse age groups. Review and consolidate the playground infrastructure.

07 Park Amenities

Issues

No shade / shelter, no BBQ facilities, limited seating and rubbish bins, under utilised signage, way-finding and graphic.

Limited access to water points and limited rubbish bins.

Opportunities

Integrate social recreational facilities such as BBQ, shelter. Introduce interpretation and educational opportunities within landscapes along with nature play nodes throughout the park. Review park assets and determine if acceptable for future allocation to address rubbish and water items.



6. LANDSCAPE CONCEPT PLAN DIRECTION

6.1 Vision

The vision for Charles Rooks & Dagola Reserve is to establish a dynamic and diverse park that enhances and maintains its unique identity and ecological value. The park will offer a varied, safe, ecologically rich experience

Charles Rooks and Dagola Reserve Perspective

The views showcase Charles Rooks and Dagola Reserve, highlighting its diverse features. A rain garden, playspace, native trees, understorey planting, open lawn, nature play node, and Conservation zone are seamlessly integrated into the landscape. A continuous path winds through the reserve, connecting these elements and providing access for visitors to explore and enjoy the natural surroundings.

The 3D artist impression is for illustrative purposes only. It is intended to provide a visual representation and may not precisely depict the final design.



Charles Rooks Reserve



Dagola Reserve

6.2 Principles

The landscape Concept Plan for Charles Rooks and Dagola Reserve is guided by five core principles. These principles help establish a long-term strategic vision and serve specific purposes in shaping the reserve's development.



01

Develop a landscape concept plan for the 15-year project implementation.



02

Enhance and preserve the natural environment.



03

Promote diverse recreational opportunities for physical and mental well-being.



04

Connect communities to existing rich habitat and sustainable water practice.



05

Connect communities through varied activities and interactions.

6.3 Charles Rooks and Dagola Reserve Landscape Concept Plan

The Landscape Concept Plan Charles Rooks and Dagola Reserve aims to enhance Access and Movement, improve Open Space and Landscape Character and upgrade Recreation facilities and amenities for local and broader communities.

6.4 Key Projects

Access and Movement

- 01 02 **A connected path network**
- 03 04 Establish a connected path network through Charles Rooks and Dagola Reserve with existing and new paths.

Open Space and Landscape Character

- 05 **Improve reserve safety, sightlines and passive surveillance**
Implement maintenance strategies to facilitate plant growth while ensuring improved sightlines
- 06 **A strategy for the replacement of pine trees**
Develop a tree replacement strategy for the aging pine tree population.
- 07 08 **Incorporate the existing understorey planting**
Enhance existing understorey planting and protect remnant vegetation and expand Conservation areas.
- 09 10 **Establish new garden beds**
Planting additional garden beds and increase garden bed planting along road edges.
- 11 **Ecologically sensitive lighting**
Consider light fittings with motion activation, time restriction and fauna-sensitive lights to decrease impacts on the habitat.

Recreation Facilities and Amenities

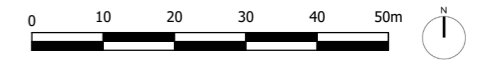
- 12 13 **Upgrade playground facilities**
Upgrade and consolidate the playground facilities at Charles Rooks Reserve to offer a diverse range of play opportunities for all age groups. Create a multi-use area including shelter, BBQ facilities, tables and benches, waste bins, and water point at the southwest of the Charles Rooks Reserve.
- 14 15 **Enhance park amenities**
Restore the existing play space to natural landscape, add seating and picnic setting opportunities that would better fit the natural environment throughout Dagola Reserve.

Provide additional seating areas throughout the reserve.



Legend

- Existing Trees
- Proposed Trees
- Existing Garden Bed
- Proposed Garden Bed
- Existing Conservation Area
- Proposed Conservation Area
- Remnant Vegetation Area (EVC 2005)
- Potential Conservation Area
- Proposed Rain garden/Wetland
- Lawn
- Existing Path
- Proposed Permeable Path
- Proposed Sealed Path
- Proposed Bench Seat
- Proposed Picnic Setting
- Proposed Playground
- Proposed Lights
- Proposed Multi-use area
- Way-finding Signage
- Educational Signage
- Water Point



6.5 Concept Landscape Plan Elements

The Concept Landscape Plan can be described by the following elements. The Concept Landscape Plan aims to enhance and protect existing infrastructure and guide the development of the reserve for the next 15 years.



Existing Trees

Retain existing trees throughout the reserve in alignment with the proposed concept plan.



Proposed Trees

Develop a tree replacement strategy that gradually removes aged pine trees when appropriate and replaces them with a diverse selection of new tree species.

Existing Garden Bed

Retain and enhance existing understorey planting. Review remnant vegetation locations with planting strategy and protection in the east of Dagola Reserve.



Proposed Garden Bed

Enhance the understorey planting at Dagola Reserve with additional garden beds, especially to the east next to Conservation areas, and plant the north edge interface with the pipe track. At Charles Rooks Reserve, plant road edges, and increase garden bed planting on the west.

Existing Conservation Area

Retain the existing Conservation area to further encourage endemic flora and fauna.

Proposed Conservation Area

Expand Conservation areas in the northern area of Charles Rooks Reserve.

Proposed Rain Garden/Wetland

Investigate opportunities to create rain garden/wetland at the southeast entrance to provide diverse habitats for local fauna and enhance the landscape experience for park users.

Lawn

Retain the lawn area in the center of the Charles Rooks and Dagola Reserve, and consider using native grass species to support local ecology and habitat.

Proposed Lights

Propose lighting along the main path network to improve public safety and night visibility. Review proposed light fittings with motion activation and fauna-sensitive lights to decrease impacts on the habitat.

Existing Path

Upgrade retained existing paths to improve accessibility throughout the reserve.

Proposed Permeable Path

Provide a 2.5m wide continuous loop path throughout the reserve to enhance accessibility and improve the reserve experience, ensuring the alignment of the path retains existing trees.

Proposed Impermeable Path

Provide a 2.5m wide continuous loop path throughout the reserve to enhance accessibility and improve the reserve experience, ensuring the alignment of the path retains existing trees.

Way-finding Signage

Provide Way-finding signage at main entries of the reserve to provide navigation and information to enhance visitor experience, safety and accessibility.

Educational Signage

Introduce Educational signage and integrate interpretation and opportunities within landscapes throughout the reserve. Key areas to include Conservation and habitat zones.

Proposed Bench Seat

Provide additional seats throughout the reserve.



Proposed Multi-use Area

Create a multi-use area including shelter, BBQ facilities, tables and benches, waste bins, and water point at the southwest of the Charles Rooks Reserve.



Proposed Playground

Upgrade and consolidate the playground facilities at Charles Rook Reserve to offer a diverse range of play opportunities for all age groups.

Water Point

Provide water point at the southwest of the Charles Rooks Reserve next to the playground.

6.6 Tree Canopy Coverage

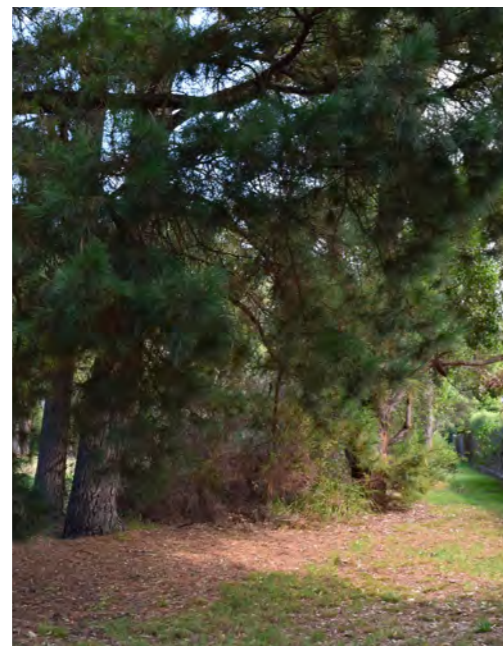
The Charles Rook and Dagola Reserve Concept Plan seeks to align with the City of Whitehorse's Environmentally Sustainable Design Policy by targeting 30% canopy cover, primarily through the preservation of existing trees and the planting of new ones.

Currently, the existing tree canopy coverage at Charles Rook and Dagola Reserve is 54%, and the proposed additional coverage is 2% as outlined in the Concept Plan, bringing the total canopy coverage to 56%.

This calculation does not account for expected canopy growth; it assumes a conservative estimate of a 5m canopy diameter per proposed tree.






Site photo: Existing pine trees



Precedent: a variety of native trees with understory planting.



Legend

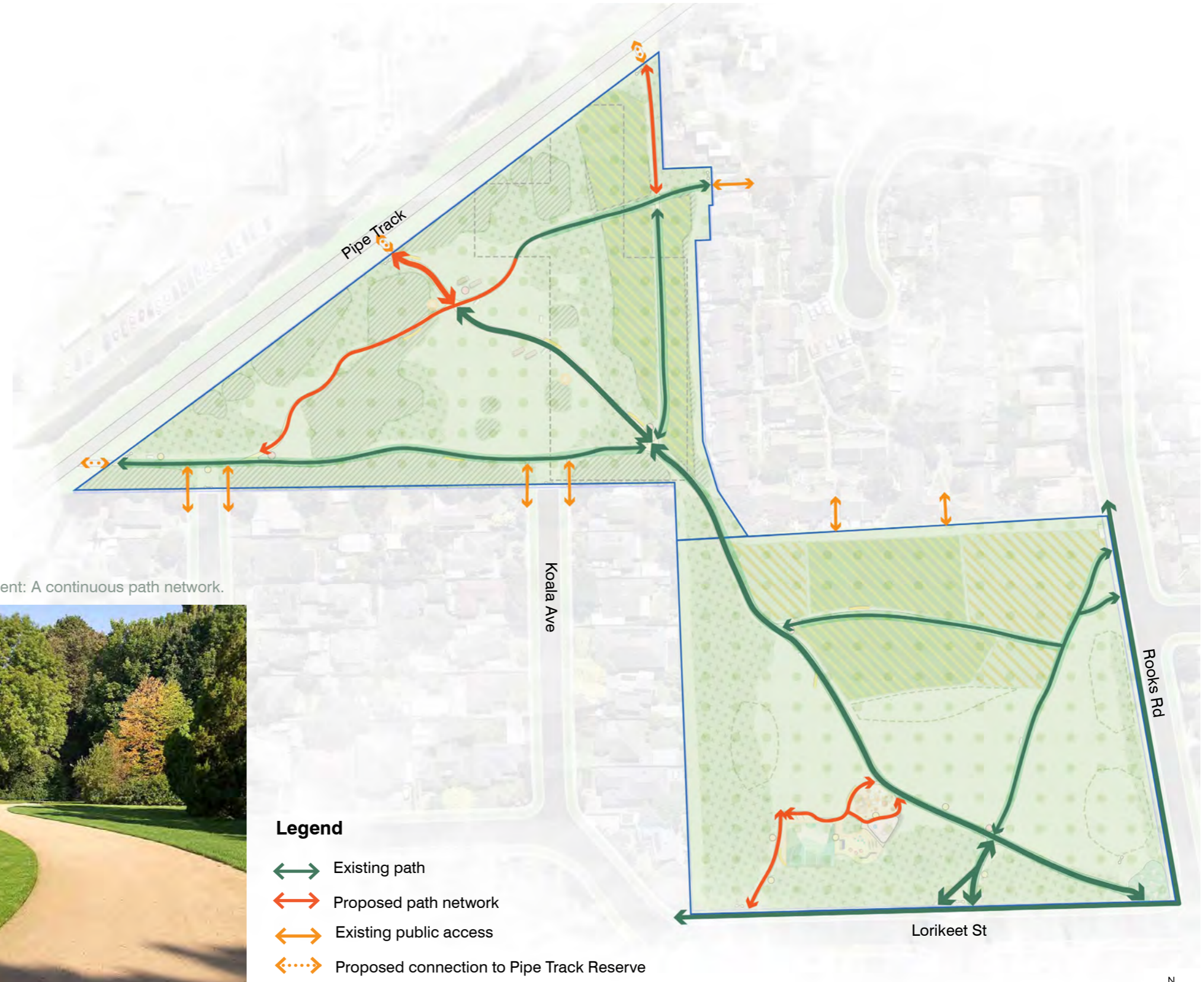
-  Existing trees to be retained
-  Proposed trees
-  Potential tree removal to be investigated

6.7 Path Network

The existing network of pedestrian paths at Charles Rooks and Dagola Reserve has limited connections.

The Landscape Concept Plan proposes continuous loop paths throughout the reserve, formalised by a 2.5m wide main path connecting Charles Rooks and Dagoala Reserve and a series of 1.8m wide secondary paths. These paths will connect the main site entrances, enhancing accessibility and improving the overall reserve experience.

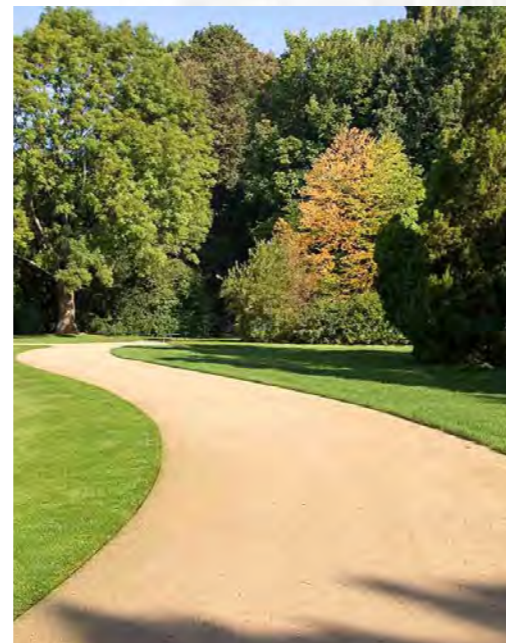
The plan also proposes path connections to the adjacent Pipe Track Reserve.







Site photo: Existing gravel path

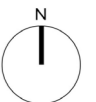


Precedent: A continuous path network.



Legend

-  Existing path
-  Proposed path network
-  Existing public access
-  Proposed connection to Pipe Track Reserve

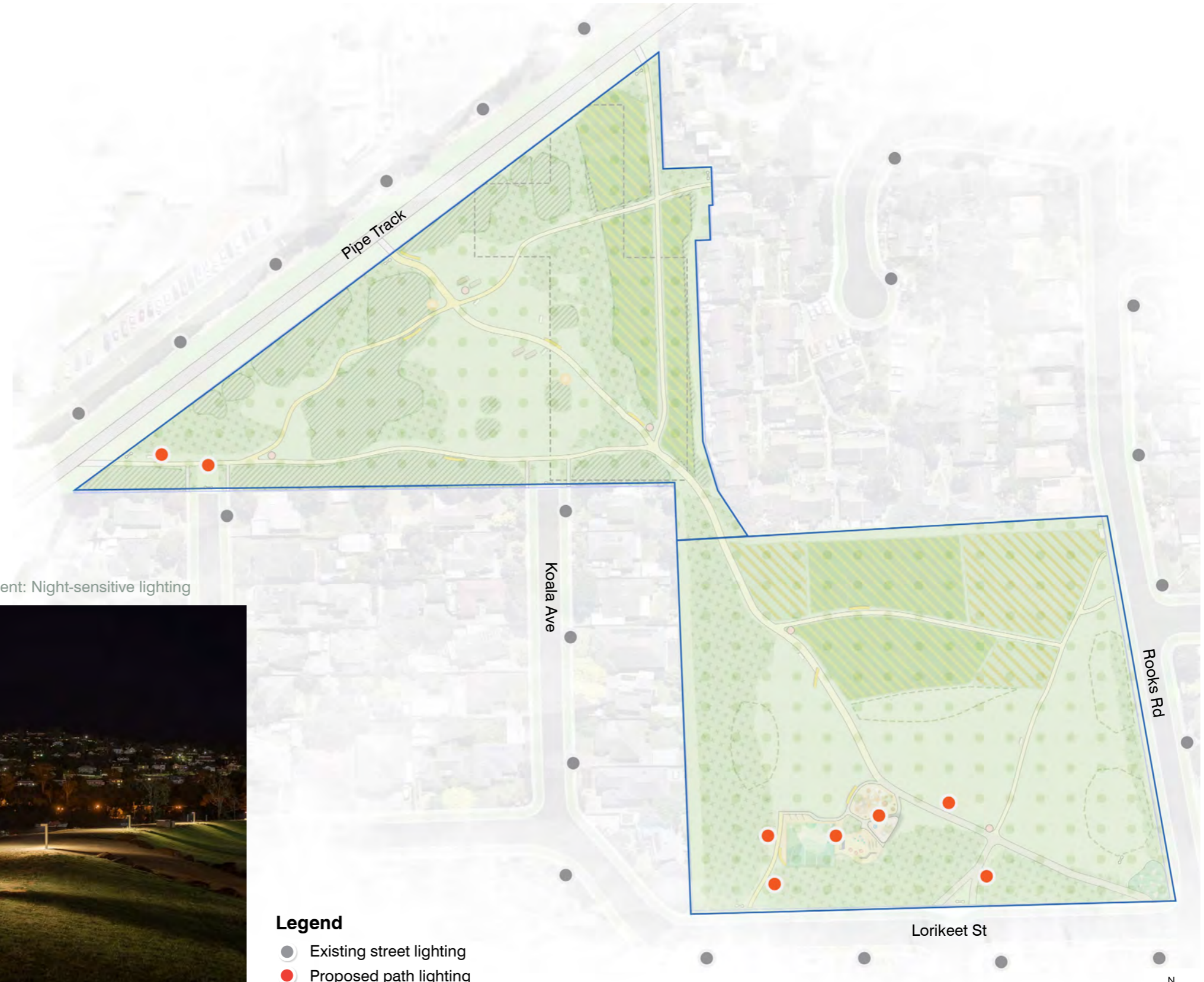


6.8 Lighting

The Charles Rooks and Dagola Reserve Concept Landscape Plan proposes lights at the Dagola Ave entry to encourage usage and at the multi-use area to enhance public safety and accessibility during nighttime.

Given the reserve's distinctive natural landscape character, it's important to consider wildlife-sensitive lighting options to minimise impacts on the reserve habitat.

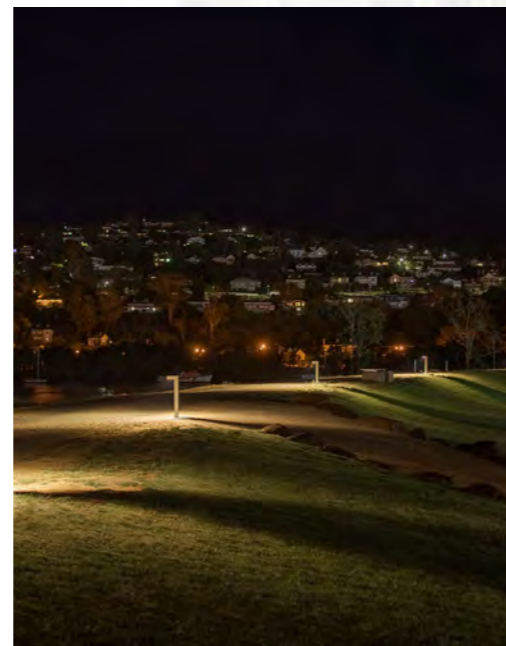
The lighting placement is indicative only, the final arrangement will be subject to detailed design



Site photo: Currently no lighting in the reserve

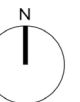


Precedent: Night-sensitive lighting



Legend

- Existing street lighting
- Proposed path lighting



6.9 Precedents

Images demonstrate potential improvements for Charles Rooks and Dagola Reserve.

Please note that all precedent images provided are intended solely for reference. They are meant to serve as visual examples or inspiration and should not be interpreted as final designs or exact representations of the proposed outcomes



Open space



A continuous path network



Native trees



Diverse understory planting



Conservation grassland



Nature play



Explore the nature



Education signage



Park bench seat



BBQ facilities



Rain garden/wetland



Multi-use area

7. 15 YEARS CAPITAL WORKS PROGRAM

The key projects outlined in the Landscape Concept Plan have been prioritised below according to perceived need and ability for Council to implement through current/future resourcing and funding opportunities. It is important to note that the inclusion of these projects does not directly commit Whitehorse City Council, user groups or any other organisation to a responsibility for funding and implementing these projects.

Opinion of probable costs have been allocated to each recommendation, and where appropriate. The costs include assumed design fees, statutory fees, or other costs associated with developing the Master Plan recommendations to implementation stage. Costs are based on current rates and will be subject to escalation.

Priorities assume the following time frames:

High Priority Actions: now - 5 years - (FY25/26-FY29/30)
Medium Priority Actions: 6 - 10 years - (FY30/31- FY34/35)
Low Priority Actions: 11 - 15 years - (FY35/36- FY39/40)

Version7
19/11/2025

Key Projects	Project	Recommendation	Priority/ Time	OPC
Access and Movement				
A connected Path Network	1	Upgrade the existing path starting from center of Lorikeet street footpath extending along the main central path up to play space to a 2.5m sealed path. Upgrade remaining central path to a width of 2.5m, extending it to Dagola Reserve and connecting with Pipe Track Reserve. Upgrade other existing paths at Charles Rooks Reserve and Dagola Reserve to a 1.8m width. Consider sustainable and suitable materials that meet the Council's maintenance requirements, ensuring a durable and trafficable surface for all paths. Alignment of the path to ensure retention of all trees. <i>(To be delivered in conjunction with item 2)</i>	High	\$121,160
	2	Provide a 1.8m path connecting the east and south paths in Dagola Reserve. Provide a sealed 1.8m wide path connecting central path and path in the west encircling play space and social recreation area and linking to Lorikeet Street. Consider sustainable and suitable materials that meet the Council's maintenance requirements, ensuring a durable and trafficable surface for all paths. <i>(To be delivered in conjunction with item 1)</i>	High	\$31,200
	3	Provide integrated way-finding signage at the park entrances to improve navigation and visitor experience.	Medium	\$6,600
	4	Provide educational signages within landscapes throughout the park. Key areas to include Conservation and habitat zones.	Medium	\$8,800

2.0 Open Space and Landscape Character	Project	Recommendation	Priority	OPC
Improve reserve safety, sightlines and passive surveillance	5	Develop a site wide planting management plan that includes the addition of native tree species, review of remnant vegetation location, replacement of ageing pine trees and a sight line assessment. Implement maintenance strategies to facilitate plant growth while ensuring improved sightline aligning with Crime Prevention Through Environmental Design (CPTED) principles and design outcomes.	Medium	\$30,000.00
A strategy for the replacement of pine trees	6	Plant additional trees throughout the reserve where existing trees are not present and after aged pine trees are removed. Investigate suitable native species to ensure maximum growth and climate resilience.	Medium	\$33,000.00
Incorporate the existing understorey planting and establish new garden beds	7	At Dagola Reserve, enhance existing understorey planting to the east next to the Conservation areas.	Medium	\$30,525.00
	8	Expand Conservation zones in the north east of Charles Rooks Reserve. Investigate opportunities to maintain other higher quality intact areas for their ecological value that is presently within mown area.	Medium	\$30,000.00
	9	Plant additional garden beds. Plant the road edges on the East and South side of Charles Rooks Reserve. Increase garden bed planting on the West with offset to property for fire protection. Plant the north edge interface with the pipe track.	Medium	\$41,250.00
	10	Explore opportunities to create wetlands/rain gardens at the southeast entrance to provide diverse habitats for local fauna and enhance the landscape experience for park users.	Medium	\$13,200.00
Ecologically sensitive lighting	11	Provide ecologically sensitive solar lighting around the play and social recreation area and along southern path near Dagola Avenue. Consider light fittings with motion activation, time restriction and fauna-sensitive lights to decrease impacts on the habitat.	High	\$54,600.00

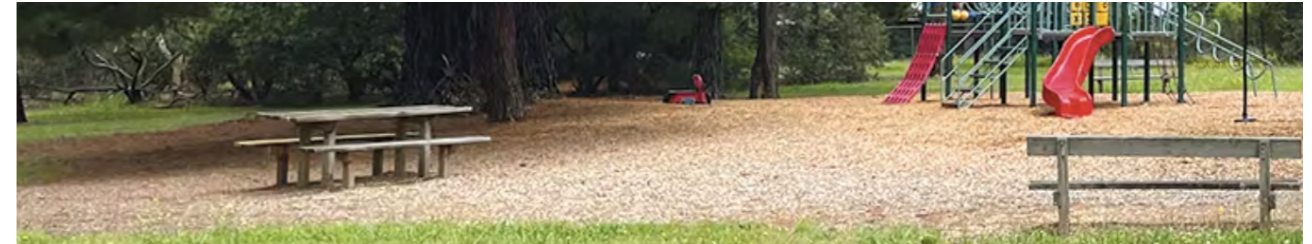
3.0 Recreational Facilities and Amenities	Project	Recommendation	Priority	OPC
Upgrade playground facilities	12	Upgrade existing playspace at Charles Rooks Reserve to offer a diverse range of play opportunities for all age groups including picnic settings with shelter, BBQ, tables and benches, and water point. <i>(To be delivered in conjunction with project 13)</i>	High	\$350,000.00
	13	Provide a half court and outdoor exercise equipment to cater all ages. <i>(To be delivered in conjunction with project 12)</i>	High	\$250,000.00
	14	Restore the existing play space to natural landscape, add seating and picnic setting opportunities that would better fit the natural environment throughout Dagola Reserve.	High	\$11,000.00
Improve park amenities	15	Provide additional seating areas throughout the reserve.	High	\$13,200.00

Sub Total* \$1,024,535.00



Appendix

A. COMMUNITY CONSULTATION SUMMARY



Charles Rooks - Dagola Reserve Landscape Master Plan

Feedback closed on 18 February

Thank you to everyone who shared their thoughts on Charles Rooks - Dagola Reserve. We are currently considering your feedback. To stay updated on the progress of this project please subscribe on the 'Follow Project' box on this page.

Background Information

In May 2021 we invited local residents to share their thoughts about the playgrounds at Charles Rooks and Dagola Reserve in Nunawading. We heard a variety of opinions and suggestions from community members who use these two Reserve.

In 2024, we asked for feedback to help us prepare a Landscape Master Plan for Charles Rooks and Dagola Reserve in Nunawading. The Landscape Master Plan will provide a clear direction for the future development of both Reserve as places for the local community to enjoy, and for the preservation and regeneration of indigenous vegetation.

Located in Nunawading, Charles Rooks and Dagola Reserve are small, connected Reserve totalling 3.4 hectares in size. The two Reserve are linked by a narrow neck of open space between two housing developments. These are open parkland with indigenous tree species and native vegetation and are used by the community for a variety of passive recreational purposes. there are currently two small playgrounds - one located in each reserve. The Pipe Track Reserve is located immediately North-West of Dagola Reserve and is owned by Melbourne Water.

Project Timeline

- **Community pop-up session**
 Learn more and share your ideas for Charles Rooks and Dagola Reserve at our pop-up session. Chat to us over a free coffee. there will also be free treats for the kids.

Date and Time: Saturday, 20 January 2024, 10:00am-12:00pm.

Location: Charles Rooks Reserve, Lorikeet Street
- **Community Engagement Round #1**
 15 January 2024 - 18 february 2024
- **Draft Charles Rooks and Dagola Reserve Landscape Master Plan**
 Mid 2024
- **Community Engagement Round #2**
 This is an upcoming stage for Charles Rooks and Dagola Reserve Master Plan

 Details TBC

FAQs

- ? What is a Landscape Master Plan and why is it needed?
- ? Who can share their ideas for Charles Rooks and Dagola Reserve Landscape Master Plan?
- ? What will you do with the community's ideas?
- ? When will the draft Landscape Master Plan be ready?
- ? Will there be an opportunity to give feedback on the draft Landscape Master Plan?

Summary of the Engagement Activities

Charles Rooks and Dagola Reserve community engagement round one has been launched, involving several activities to gather feedback. Letters were sent to residents encouraging participation in the Your Say survey. The survey, held from January 22 to February 18, received responses from 220 participants.

Friends of Charles Rooks and Dagola Reserve were engaged to gather further feedback.

Summary of the engagement activities

1. Letters to Residents:

- Sent letters informing residents about the project and encouraging participation in the Your Say survey.
- Total of 943 letters sent to residents within a 500m catchment area.

2. Your Say Survey:

- Conducted from January 15, 2024- February 18, 2024.
- A total of 683 people were aware through Your say platform of which 220 completed the survey

3. Community Pop-up Session:

- Held on January 20, 2024, from 10:00 am to 12:00 pm.
- Approximately 50 attendees, urged to complete paper or online surveys.

4. Engagement with Mount Pleasant Road Primary School Students:

- February 15, 2024; 9 students attended.

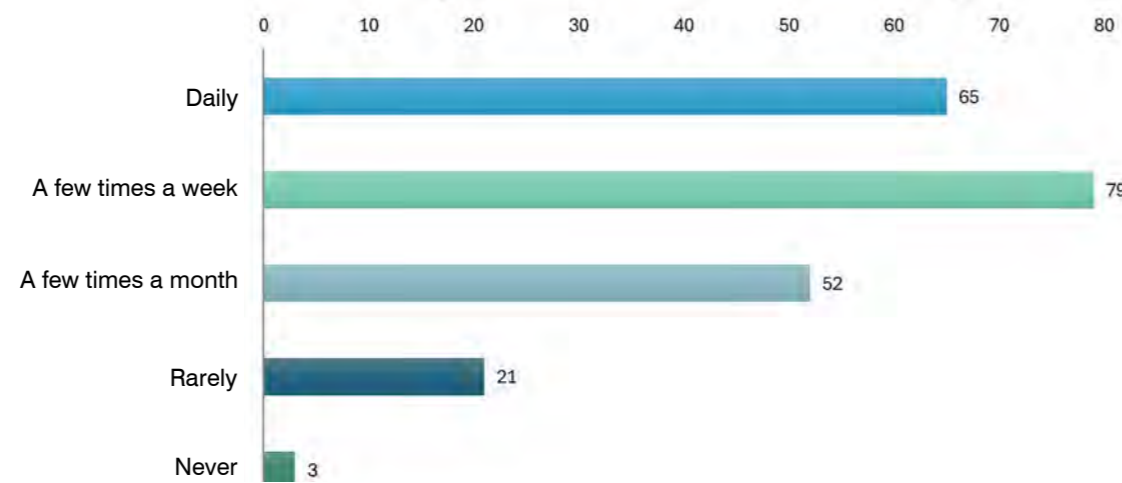
5. Engagement with Friends of Charles Rooks and Dagola RESERVE:

- February 29, 2024; 3 members attended.

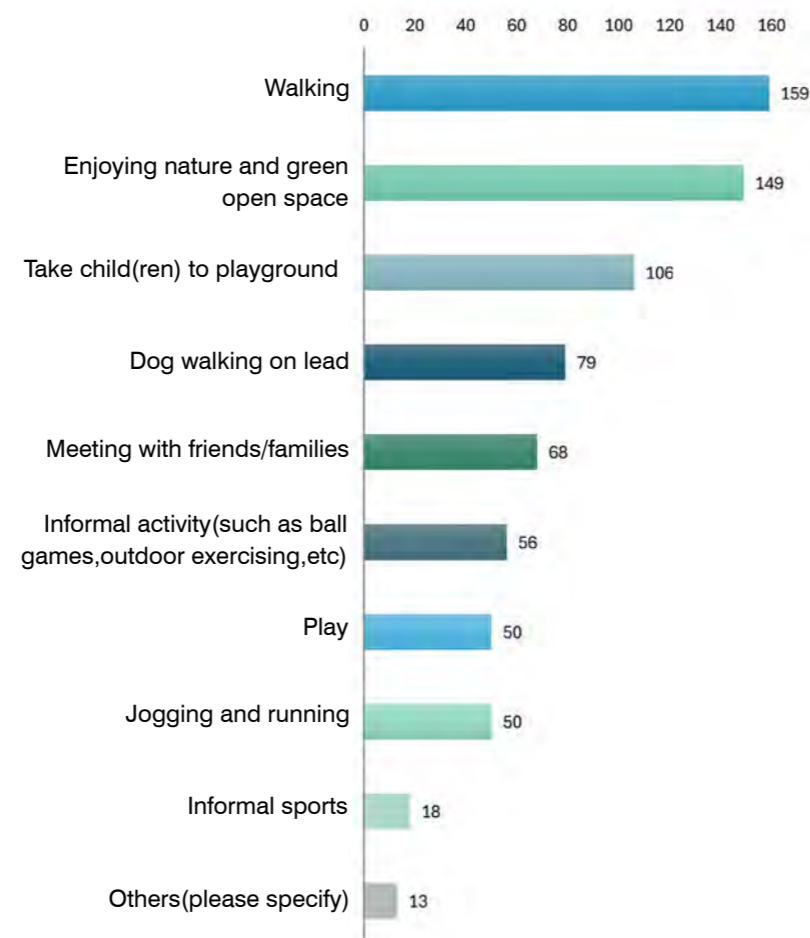
6. Key Findings

- Demographic
- Traveling method
- Park visitation and park use
- Park safety and improvements
- Other community comments

How often do you visit Charles Rooks and Dagola Reserve



How do you use Charles Rooks and Dagola Reserve? Please select your top five below.



Charles Rooks and Dagola Reserve visitation and park use key findings

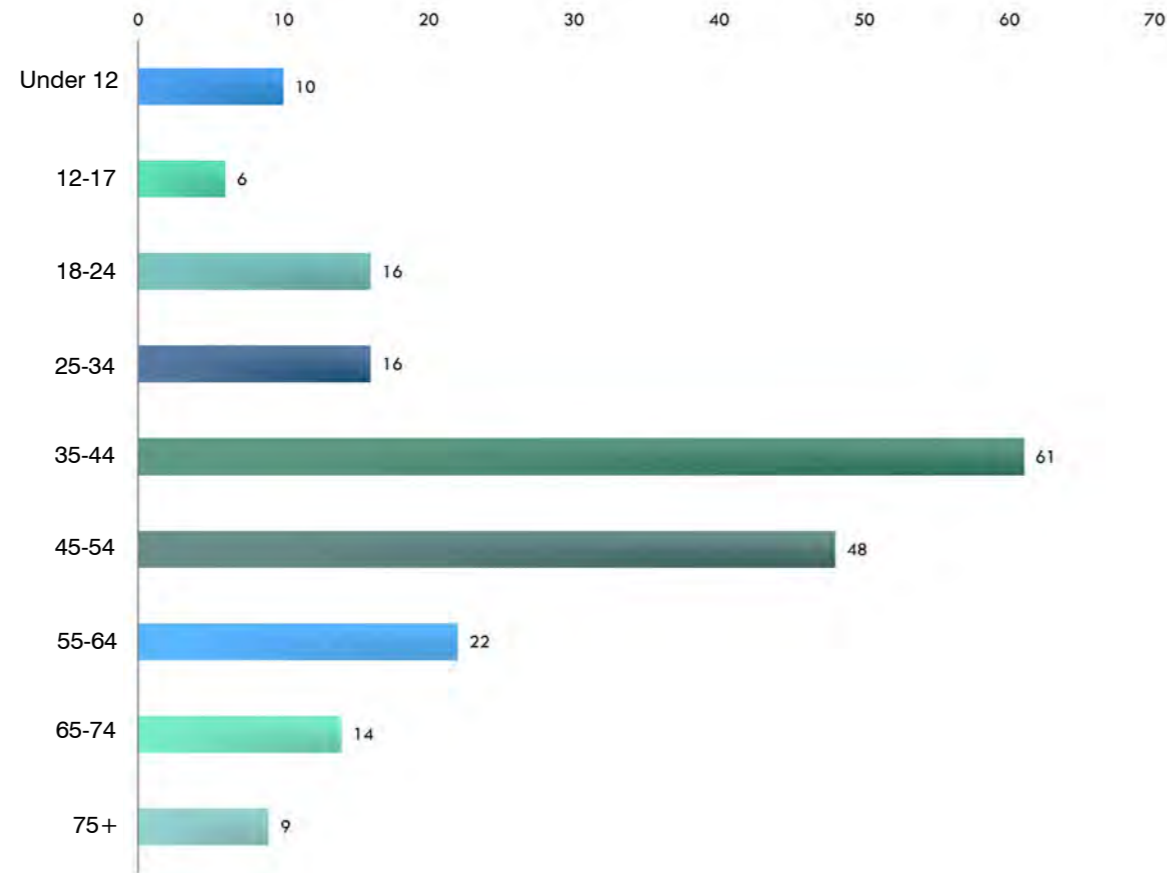
- More than 65% of the survey respondents visit Charles Rooks and Dagola Reserve daily or a few times a week.
- About 11% of respondents visit the park rarely or never visit the Charles Rooks and Dagola Reserve .
- Approximately half of the respondents typically stay at the park for an hour or two, while the other half of the respondents stay at the park for less than 30 minutes.
- The park has been used in a diverse range of ways, encompassing physical activity, leisure, and social interactions.
- Most of respondents engage in walking in the Charles Rooks and Dagola Reserve. The top five park use activities identified are:
 - Walking (159 respondents)
 - Enjoying nature and green open space (149 respondents)
 - Taking child(ren) to playground (106 respondents)
 - Dog walking on lead (79 respondents)
 - Meeting with friends/families (68 respondents)

96% of survey respondents are from local, Nunawading and Mitcham

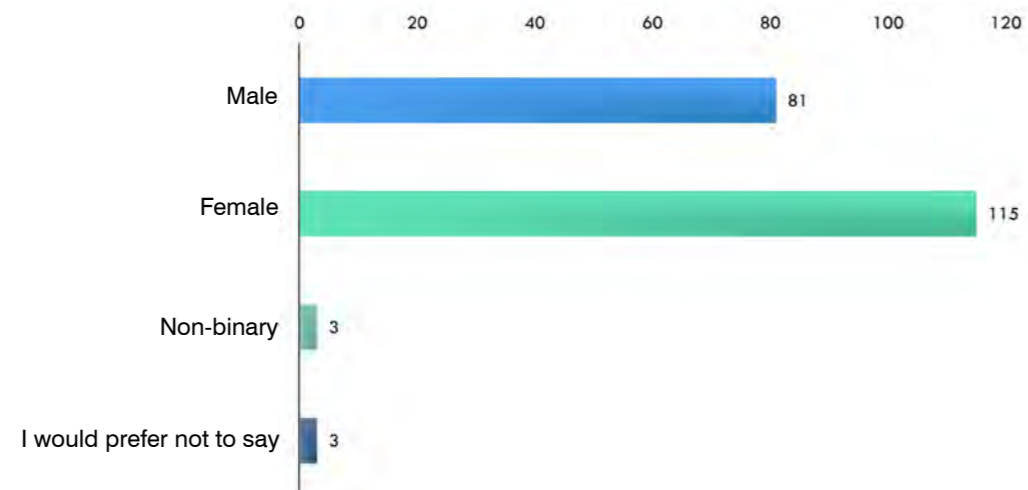
65% of the survey respondents visit Charles Rooks and Dagola Reserve daily or a few times a week

Top five park facilities include walking, enjoying nature and green open space, playground, dog walking and meeting friends and family openness

What is your age group?



What is your gender?



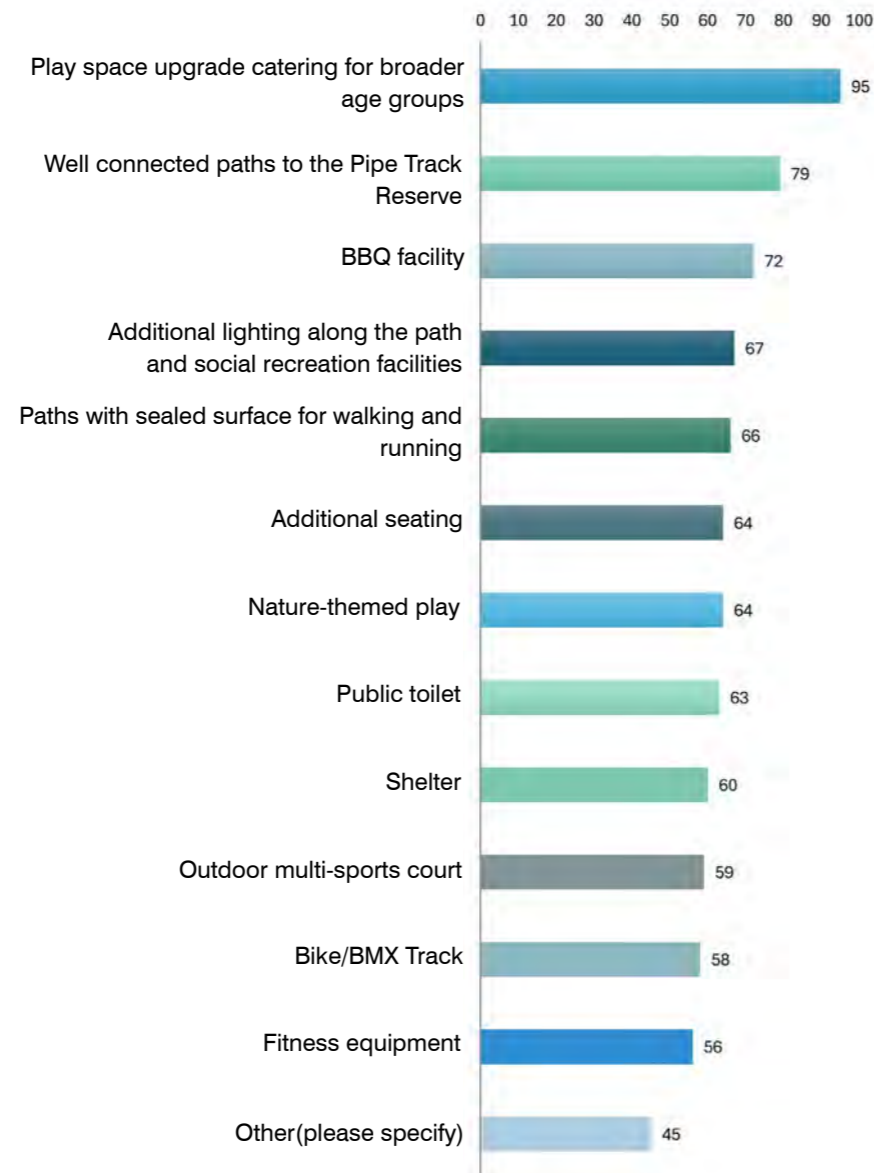
Demographic key findings

- All age groups were quite well represented in the survey responses.
- 76% of the survey respondents fall within the age group of 35 to 75. Respondents aged 12 to 34 comprise 24% of the total.
- The female users of Charles Rooks and Dagola Reserve outnumber the male users. Specifically, 57% of the respondents are female, while 40% are male. Additionally, 1.5% of respondents identify as non-binary, and 1.5% would prefer not to say
- About half of the survey respondents are from local, Nunawading. The remaining respondents are distributed among 18 other suburbs. Within this distribution, 44% are from other suburbs within Whitehorse City Council, while 9% are from suburbs outside Whitehorse City Council.
- Out of the 66 survey respondents, 5 individuals reported having a disability or impairment, 3 identified as Aboriginal or Torres Strait Islander, and 26 stated they are from a non-English speaking background.
- The Reserve users represent a diverse range of backgrounds, with 72% (143 respondents) being born in Australia and 28% (57 respondents) originally from overseas.
- Most of the respondents report that English is their main language spoken at home. Approximately 16% of respondents do not speak English as their main language at home.

Traveling method key findings

- 79% of the survey respondents walk to Charles Rooks and Dagola Reserve, while 9% drive. Additionally, 12% of respondents choose cycling, jogging/running, or public transport as their mode of transportation to the park.
- For the respondents who walk to the Reserve, 89% of people walk to the park less than 1.2 km. 11% of people walk to the park between 1.2 to 5km.
- 75% of respondents drive less than 5km to the park. 15% of respondents need to drive more than 15km to get to the park from other suburbs.
- Four respondents travel to the park using public transport within a distance of no more than 15 km.
- 4% of the respondents select cycling as their mode of transportation to the park, with most respondents cycling less than 1.2 km.
- 5.6% of the respondents jog/run to the park.

What improvements would encourage you to visit Charles Rooks and Dagola Reserve more often? Please choose your top five.



Park safety and improvements key findings

- 60% of the respondents feel safe in the park; however, 34% of the respondents feel somewhat safe, and 6% do not feel safe.
- Suggestion to improve the sense of safety in the park:
 - Lighting: Install additional lighting along pathways and in dark areas of the park to improve visibility, especially during early mornings and evenings. Consider ecologically sensitive lighting options, such as solar lights, to minimize environmental impact. (24 respondents)
 - Surveillance: Implement passive surveillance measures, such as security cameras, to deter antisocial behavior and enhance safety for park users. (14 respondents)
 - Pathway Improvement: Ensure pathways are well-maintained, sealed, and wide enough to accommodate all users safely, including those with wheelchairs or strollers. (8 respondents)
 - Visibility: Trim trees and shrubs in Dagola to improve visibility and reduce hiding places. (13 respondents)
 - Entrance/Exit Safety: Enhance safety at entry and exit points into side streets by maintaining clear vision and openness. Consider installing signage or safety barriers to alert drivers to pedestrian crossings. (6 respondents)
 - Fencing: Install appropriate fencing, particularly around playgrounds, to create a secure and defined space for children to play without the risk of intrusion. (6 respondents)
- The improvements that would encourage people to visit the park more often:
 - Play space upgrade catering for broader age groups (95 respondents)
 - Well connected paths to the Pipe Track Reserve (79 respondents)
 - BBQ facility (72 respondents)
 - Additional lighting along the path and social recreation facilities (67 respondents)
 - Paths with sealed surface for walking and running. Improved pathway network (66 respondents)
 - Additional seating (64 respondents)
 - Nature-themed play (64 respondents)
 - Public toilet (63 respondents)
 - Shelter (60 respondents)
 - Outdoor multi-sports court (59 respondents)
 - Bike/BMX track (58 respondents)
 - Fitness equipment (56 respondents)
 - Others below (45 respondents):
 - Increased native vegetation, expansion of bushland, and more middlestorey vegetation along roads to reduce the noise and help the reserve feel more immersive
 - More bins
 - Improve water run off on Lorikeet St
 - Additional shade over play areas
 - Off-leash dog area

Other comments

- **Playground Upgrades:** Many people mentioned the need for playground upgrades, including equipment suitable for a range of age groups, such as toddlers to older children. Suggestions included adding swings, slides, monkey bars, and adventure playground elements. (27 respondents)
- **Pathway and Accessibility:** Suggestions were made to improve pathways, make them wheelchair accessible, and install lighting for safety, especially during nighttime. (24 respondents)
- **Amenities and Facilities:** There were mixed opinions regarding additional amenities and facilities. Some suggested adding BBQ facilities, picnic areas, public toilets, and water fountains, while others expressed concerns about attracting undesirable behavior such as vandalism and crime. (20 respondents)
- **Social Recreation Facilities:** Requests were made for sporting facilities such as basketball courts, netball courts, tennis walls, and soccer pitches. However, concerns were raised about potential noise and disturbance to nearby residents. (17 respondents)
- **Dog-Friendly Features:** Some respondents requested a designated off-leash area for dogs, while others expressed concerns about dogs being off-leash and suggested maintaining on-leash rules. (9 respondents)
- **Nature Conservation:** Several respondents emphasised the importance of preserving and expanding the native bushland areas within the reserve. Suggestions included increasing indigenous plantings, creating habitat for wildlife, and protecting remnant vegetation. (7 respondents)

Q: Do you have any suggestion to improve the sense of safety in the park? (e.g. Passive Surveillance, additional lighting etc.)

“Surveillance and lighting.”

“Better footpaths.”

“Keeping trees and shrubs prune and grass cut so enhances visibility for people using the facilities. Ecological sensitive lighting is a great idea and passive surveillance to ensure that women and families with children feel safe to use facilities.”

“There is insufficient fencing between the park and road in some areas, as well as multiple instances of people bringing large dogs off lead into the park and playground. This can create an unsafe atmosphere for dog walkers who do the right thing and keep their dogs on leash, or parents taking their children to the playgrounds.”

“Lots of large tree and bushes and not many people seem to go there, if more people use the reserve, we are more likely to use it as well. The play equipment there is very old and there’s better playgrounds like Halliday to go to, but much further.”

Q: Do you have any other comments?

“There are a few tall trees in the reserve that are close to properties. One of the trees did fall in 2020, and there just feels like there is a good chance it’ll happen again with damage to private property next time. Some of the trees that are within falling distance to houses maybe could be reduced.”

“I love the vegetation and simplicity of the reserved. The playgrounds are both tired and in need of an upgrade, while my kids have used them for 8 years and wouldn’t want to change a thing.”

“Increased protection for the Conservation areas and potentially increasing the Conservation areas..”

“Bbq would be great and public toilets. It would also be great for it to be an inclusive space so people with a disability could use the pay equipment and move around the park also a path.”

“Al love this reserve, a tranquil respite hearing the birds and observing the trees no matter what time of the year. These Reserve are irreplaceable oasis’s in our area.”

“Outdoor gym equipment, such as those found in many other parks in Melbourne would be a great public health addition that are typically used by a wide range of ages including seniors.”

“It would be nice to see the remnant native vegetation protected and restored.”

Key Stakeholder Engagement

- A discussion session with representatives from Friends of Group at Charles Rooks- Dagola Reserve was conducted online on the 29th of February to understand their aspirations for the site.
- The discussion focused on the key stakeholders aspirations for the site.
- Transitional landscape strategies to replace large pine trees, lots of birds nesting hollows exist in trees and progressive tree replacement will be required.
- Need water points in the reserve.
- Charles Rooks reserve is more formal space
- Dagola reserve is less formal, and more grass vegetation and bushland character
- Currently many low to middle-level shrubs
- Consider using native vegetation to design the site
- Plants signage – interpretative signage for education purposes
- Consider replacing pines trees with native landscape
- Remnant vegetation a map of remnant vegetation areas within and beyond the Conservation zones was provided.
- Conservation zones are favourite areas and have great biodiversity
- Weed management needs to be considered
- A sense of discovery landscape Amenities & Facilities
- Potential to build up a viewing platform for a community meeting place (Dagola Reserve)
- A focal point with shelter and family BBQ
- Rubbish bins and dog poop bags
- Toilets
- Playground
- Community currently use both playgrounds
- Dagola Playspace is good as there is no traffic
- A nature play space is desired to foster a connection between people and the site
- Safety
- About 20% of survey respondents feel unsafe in the reserve
- No passive surveillance
- The issue of the narrow space – feels unsafe
- Increase signage
- Charles Rooks Reserve is surrounded by roads – seek opportunities to implement sound barrier to help reduce noise, such as through mounding landscape design.
- Issue of the Pipe Track (MW)
- The water main renewal project has resulted in the pipe track being closed off for an extended period
- Once the track is open review the connection as bikes come through at high-speed

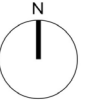
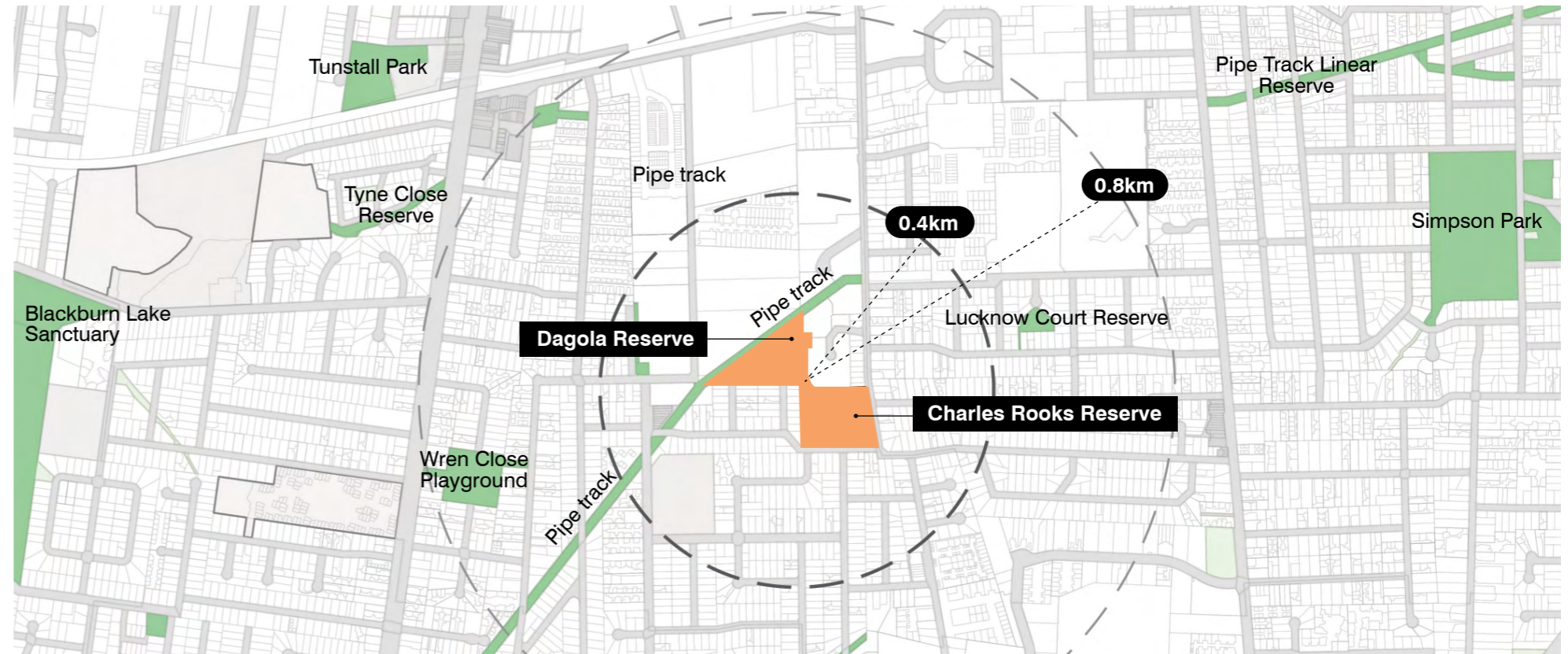
B. SITE ANALYSIS

Green Space

The diagram illustrates a walking catchment area with a radius of 0.8 kilometers, encompassing adjacent open green spaces. Charles Rooks and Dagola Reserve serve as the primary open space destinations for the local neighborhood. Dagola Reserve is connected by the Melbourne Water Pipe Track, which is an off-road bike route/shared path (currently under construction).

Legend

- Site
- Green Space
- Walking Distance



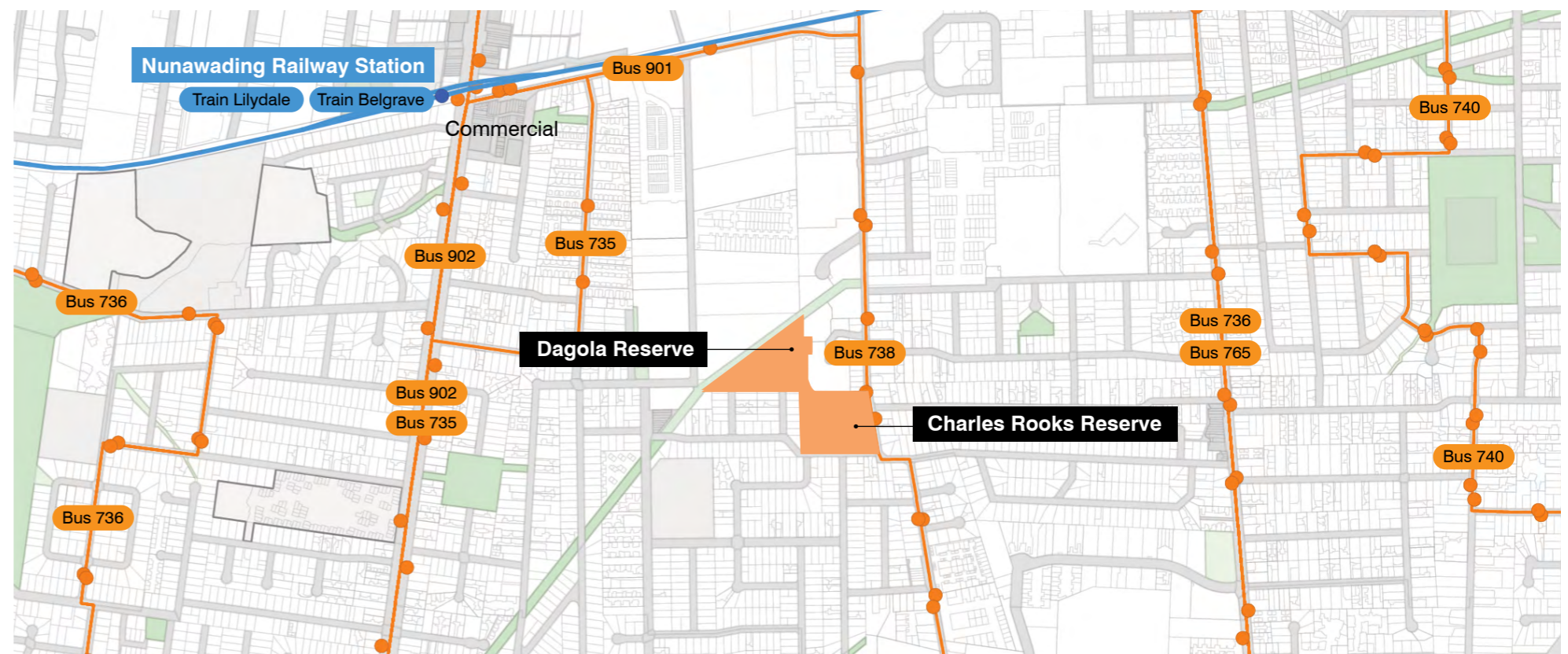
SCALE: 1 in 16000

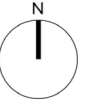
Public Transport

Charles Rooks Reserve is conveniently connected to the bus network and is also within 0.8 kilometers walking distance of the Nunawading railway station.

Legend

- Site
- Railway Station
- Bus Stop





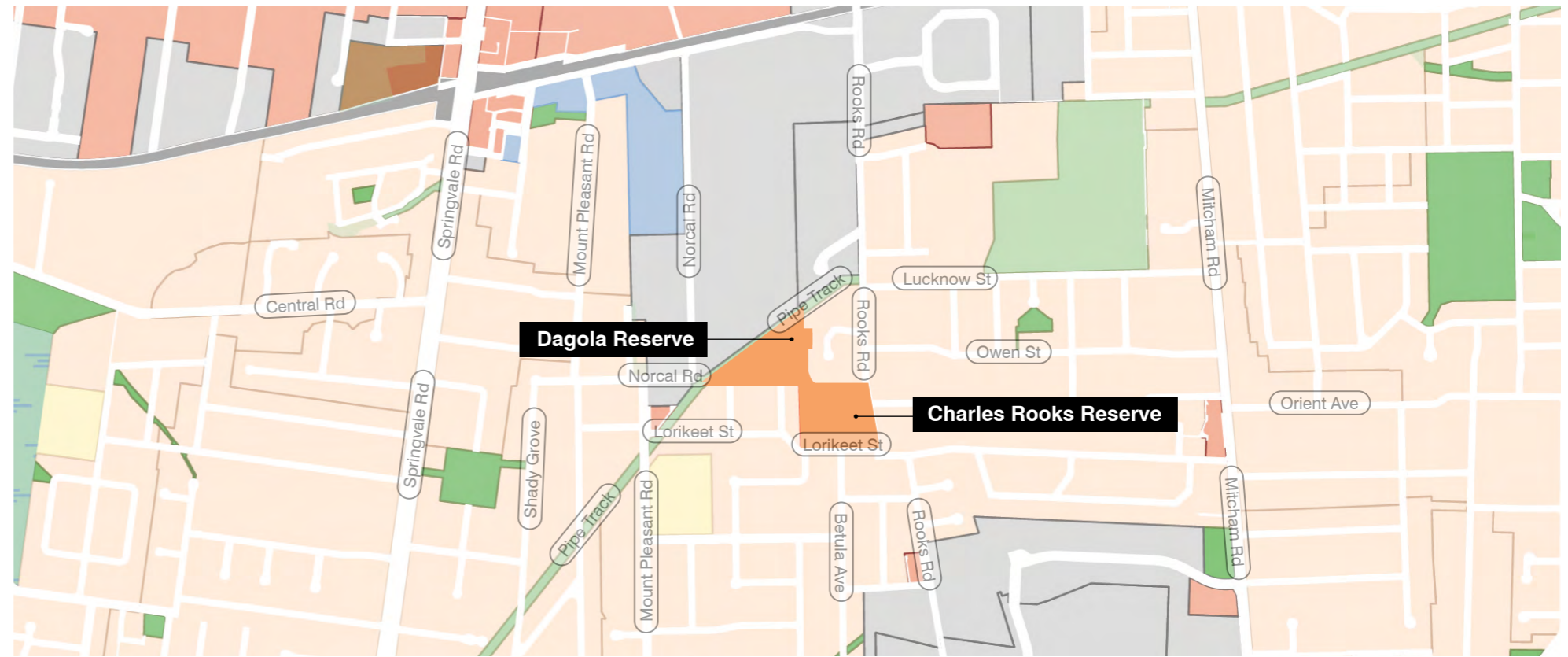
SCALE: 1 in 16000

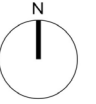
Zoning

Charles Rooks and Dagola Reserve are situated adjacent to the Pipe track and an Industrial Zone to the north, while being surrounded by Residential zone to the west, east, and south.

Legend

- Site
- Commercial Zone
- Residential Zone
- Industrial Zone
- Public Conservation and Resource Zone
- Public Park and Recreation Zone
- Public Use Zone - Service and Utility
- Public Use Zone - Education
- Public Use Zone - Local Government
- Residential Growth Zone
- Transport Zone
- Health





NOT IN SCALE

Existing Site Aerial

Charles Rooks Reserve, spanning approximately 1.9 hectares, is bounded by Rooks Road to the west and Lorikeet Street to the south, with residential areas to the north and west. The site spans approximately 120 meters in length and 160 meters in width.

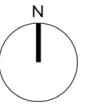
Dagola Reserve, covering approximately 1.6 hectares, is situated to the north of Charles Rooks Reserve and is connected by a pathway. It is bounded by residential areas to the south and east, with a pipe track to the north adjacent to an industrial zone.

Both Reserve characterise as a natural landscape with areas of valued remnant vegetation. Additionally, each site features a playground to serve the local community.



Legend

— Site



NOT IN SCALE

Existing Site Photos

01 - The view from Charles Rooks Reserve walks towards the Dagola Reserve.

02 - A view from Dagola Reserve reveals a clear lawn surrounded by trees, with the Pipe track visible in the background. Currently, the Pipe track is fenced off for maintenance by Melbourne Water.

03 - The pathway meanders through the Conservation zone at Charles Rooks Reserve.

04 - The pedestrian pathway at Charles Rooks Reserve leads towards Lorikeet Street, with a playground situated nearby, close to the street.

05 - Significant pine trees are planted in the northwest area of Charles Rooks Reserve. The mound beneath these pine trees was also utilised as a BMX track by the neighborhood.

06 - The playground is situated in the center of Dagola Reserve, with benches placed alongside it

07 - A view towards the entry of the pathway on Lorikeet Street at Charles Rooks Reserve with a mix of native and exotic mature trees lining each side.



01



03



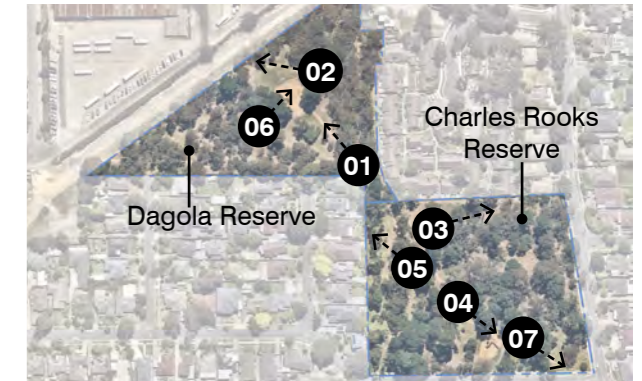
05



04



06



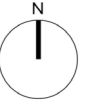
Key Plan



02



07



NOT IN SCALE

Views

The site offers a variety of viewing experiences:



The view captures the richness of the landscape at Dagola Reserve, showcasing a mix of Eucalyptus trees towering over bushland underneath.



A clear view overlooks the playground space at Dagola Reserve, with a prominent Melaleuca armillaris tree situated to the east of the view.

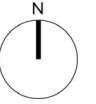


A mix of native trees with a grassy understorey creates a diverse and natural landscape at Charles Rooks Reserve.



The view captures the pathway as it meanders through the landscape, offering a clear sightline ahead.





NOT IN SCALE

Topography

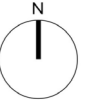
The Dagola Reserve exhibits a general elevation difference of 7 meters, ranging from the highest point at 147 meters in the northeast to the lowest point at 140 meters in the southwest.

Comparatively, Charles Rooks Reserve sits at a lower elevation than Dagola Reserve. The site descends from the highest point at 145 meters in the northwest to the lowest point at 136 meters in the southeast.



Legend

— Site



NOT IN SCALE

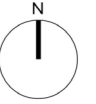
Watershed / Drainage

The diagram illustrates the overall watershed of Charles Rooks and Dagola Reserve. At Dagola Reserve, surface runoff typically flows from the northeast of the site to the southwest, and some runoff flows southeast towards Charles Rooks Reserve. At Charles Rooks Reserve, surface runoff follows the natural contours, generally flowing from the northwest to the south towards Lorikeet Street.



Legend

- Site
- ↩ Watershed
- - - Underground stormwater drain



NOT IN SCALE

Existing Trees

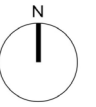
Trees at Charles Rooks and Dagola Reserve are extensively planted throughout the site, contributing to the overall landscape quality and ecological diversity. The tree species include a mix of native trees and numerous significant, well-established pine trees, particularly *Pinus radiata*.

While the majority of trees are assessed to be at low risk, a few are categorised as moderate risk. Notably, one tree has been identified as high-risk at Dagola Reserve.



Legend

- Site
- Existing Trees



NOT IN SCALE

Environmental Vegetation Classes (EVC)

Charles Rooks and Dagola RESERVE are host to one Environmental Vegetation Class (EVC):

EVC 127 Valley Heathy Forest: Defined as an area of a low, open forest to 15 m tall with a sedgy/grassy understorey with a component of small ericoid shrubs and grass-trees. Soil and moisture factors are critical in delimiting the vegetation.

The EVC can serve as a guide for future planting design proposal, ensuring alignment with the objectives of the Whitehorse City Council.



Legend

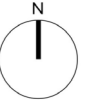
— Site

PRE - 1750

 EVC 127: Valley Heathy Forest

2005

 EVC 127: Valley Heathy Forest



NOT IN SCALE

Spatial Zoning

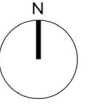
Charles Rooks and Dagola RESERVE are comprised with simple functional zones:

- Charles Rooks Reserve features extensive canopies with a generally clear understorey, although there is a patch of grassy understorey in the north and east areas. Additionally, a playground is located in the southern part of the park, near Lorikeet Street.
- Dagola Reserve consists of many vegetation patches, tree canopies, and understorey shrubs, potentially affecting sightlines. A playground is situated at the center of the reserve. The site is isolated from the main streets and adjacent to the Pipe track to the north boundary.



Legend

— Site

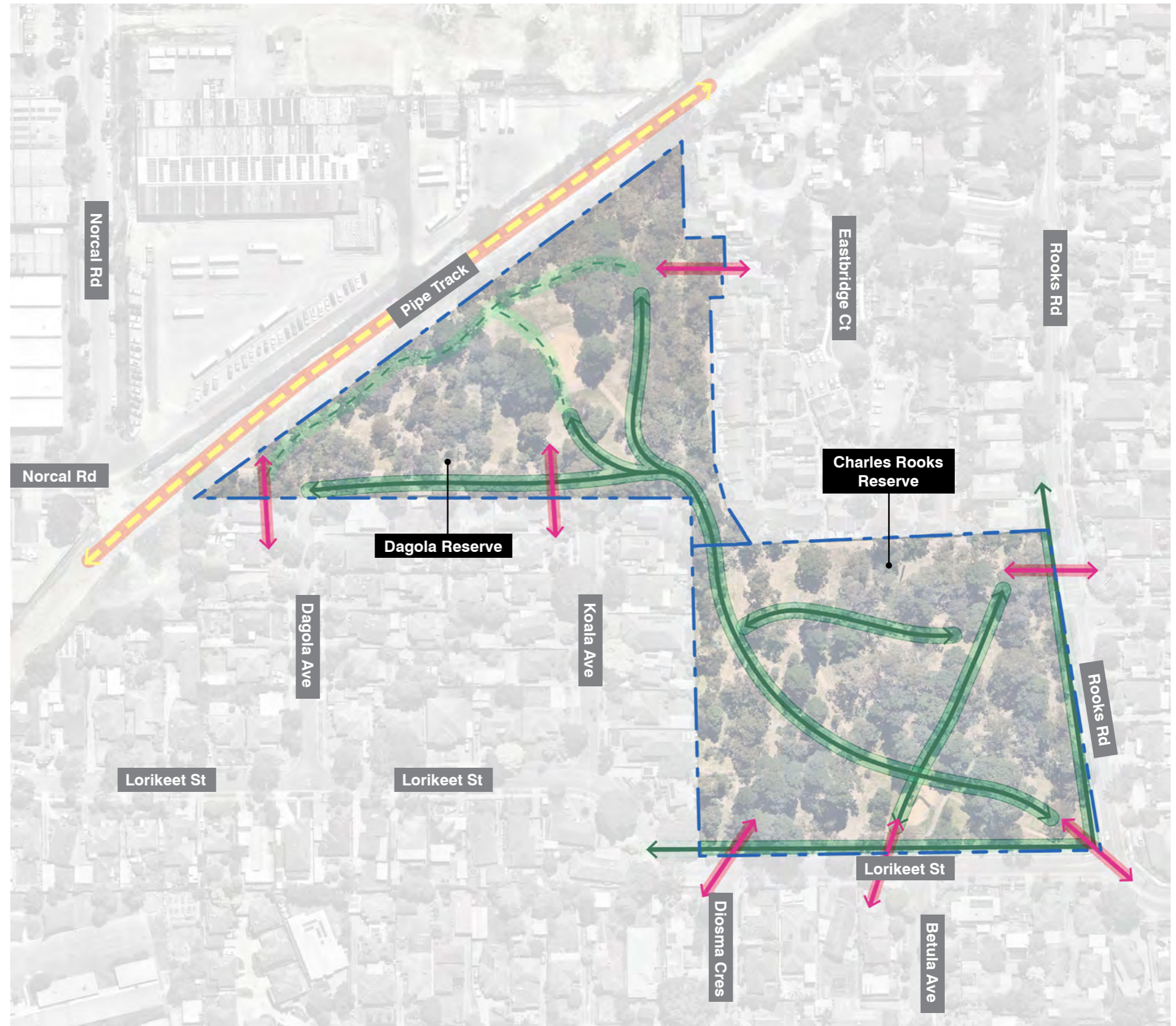


NOT IN SCALE

Access/ Circulation

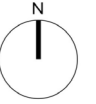
There are four key access points to Charles Rooks Reserve: two from Lorikeet Street to the south, and two from Rooks Road to the east. The site offers pedestrian footpaths along the streets, and three pathways cross the site, linking to Dagola Reserve.

For Dagola Reserve, there are three key access points: one from Dagola Avenue, one from Koala Avenue, and another access point from the east residential area. The northern site boundary has been temporarily fenced off due to maintenance work on the Pipe Track. Additionally, the site lacks formal circulation pathways, although informal circulation patterns are observed on-site to meet the needs of park users.



Legend

- - - Site
- ↔ Pedestrian Entry
- ↔ Future Bicycle Path
- ↔ Pedestrian Path (formalised)
- - - Informal Path (observed)



NOT IN SCALE

Edge Conditions

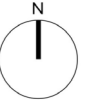
The diagram demonstrates the presence of both close and open edges on the sides of the Charles Rooks and Dagola Reserve. The Charles Rooks Reserve is characterised as open at the south and east, while close at north and west. Additionally, along Lorikeet Street, there is an area fenced off due to playground safety protection measures.

Dagola Reserve has relatively closed edges along the site boundaries, resulting in a small opening to the reserve. The northern site boundary has been temporarily closed due to maintenance work on the Pipe Track.



Legend

- Site
- Open
- Close
- Permeable (visibility)
- Temporary Closed



NOT IN SCALE

Materiality

The diagram illustrates the existing material palette of Charles Rooks and Dagola Reserve. The majority of the site is covered by soft landscape, while pedestrian pathways consist of a mix of gravel, asphalt, and concrete. Additionally, the playground is surfaced with mulch.



Legend

- Site
- Concrete
- Gravel
- Mulch
- Asphalt
- Furniture

Landscape Quality Summary

Dagola Reserve

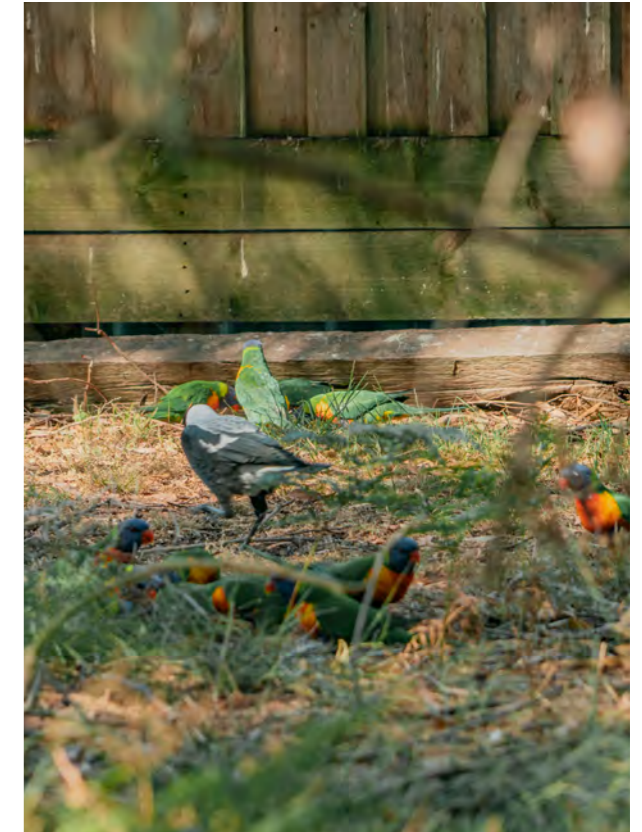
The Dagola Reserve offers a distinctive and immersive natural landscape. The reserve features mature native trees, patches of remnant vegetation, shrubs, flowers, grass, and other species. Due to the reserve's arrangement, it is hidden from the main roads but accessible by foot traffic. A clearance in the center of the site accommodates the playground, while an informal desire line has developed the path network. In some locations of the reserve, visibility is limited due to the understorey plants. Dagola Reserve is connected to Charles Rooks Reserve through a 12-meter narrow space with a pathway flanked by plantings on each side. However, sightlines along the walkway could be enhanced for better visibility and safety.

Charles Rooks Reserve

Charles Rooks Reserve is named after Charles Francis Rooks (b. 1902 - d. 1959), who served as the former mayor of Nunawading. The reserve features a blend of tree canopies, including both native and exotic species. Particularly noteworthy are the mature and well-established pine trees that contribute to the reserve's distinctive character. The site offers a pleasant experience for visitors exploring the landscape, with a playground located in the southern part of the reserve catering to the local neighborhood.



Dagola Reserve



Dagola Reserve



Charles Rooks Reserve



Charles Rooks Reserve



T.C.L

